

INTRODUCING THE ALL NEW TRIM-SIZE

FORD BRONCO II



IT'S A BRAND NEW KICK!!



THE ALL-NEW FORD BRONCO II. THE PERFECT SIZE FOR 4-WHEELING.

Bronco II is the true sport utility vehicle you've been waiting for. And it's built the way you want it with tough proven components, comfortable interiors and an all-new trim size.

Standard V-6 engine — power that S-10 Blazer can't match!

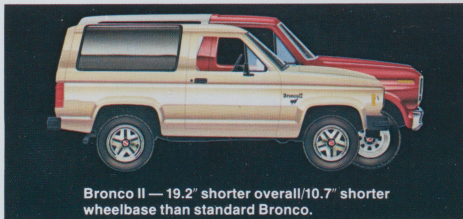
It's intelligently powered, too, with a standard V-6 engine and 4-speed manual transmission for about town cruising and off-road muscle.

And getting off-road is something you'll enjoy doing, too, because the all-new trim size means great maneuverability. High ground clearance and angles of approach and departure let you take on the slopes. And the small turning diameter — only 32.2 ft. — combined with standard power steering gets you in and out of the tight spots with ease.

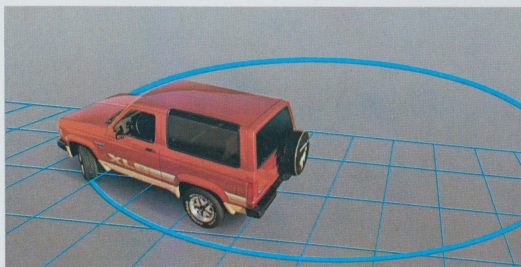
Add the proven design of Twin-Traction Beam independent front suspension and you've got one "go anywhere" 4x4.

Inside, you and up to three passengers are well looked after even in the standard Bronco II because, after all, comfort and convenience shouldn't be "extra." Full-length carpeting, reclining front bucket seats, and a unique 50/50 split fold-down rear bench seat are a few of the many standard features you'll find especially appealing. And it gets even better in the XLT and XLS editions of Bronco II. Exterior styling is another one of Bronco II's strong points. The expansive glass areas and exclusive deep tinted wrapover rear quarter windows place you in a truly enviable position.

4x4's can be tough, comfortable and stylish all at the same time. Bronco II is your best case in point. Test-drive one at your Ford Dealer today.



Bronco II — 19.2" shorter overall/10.7" shorter wheelbase than standard Bronco.



Shown with owner added winch and brush guard.

BRONCO II

Bronco II XLT



STANDARD 2.8 LITER V-6. OFF-ROAD MUSCLE.

For the muscle you need off-road, we've equipped the new Ford Bronco II with a standard V-6 engine, V-6 engine power S-10 Blazer can't match. You get extra pull for mud and snow. Plus, a standard 23-gallon fuel tank to take you farther between fill-ups. A 4-speed manual transmission is standard with available 5-speed overdrive and SelectShift automatic transmissions.

The V-6 has many important features. Perhaps the most significant is EEC-IV — the latest in Ford's state-of-the-art engine electronics arsenal. EEC-IV has the ability to digest an astounding number of engine control commands — *1,000,000 commands per second!* With this huge capacity, EEC-IV provides precise and instantaneous control over engine operations throughout the full range of driver commands and engine load conditions. A few of EEC-IV system features:

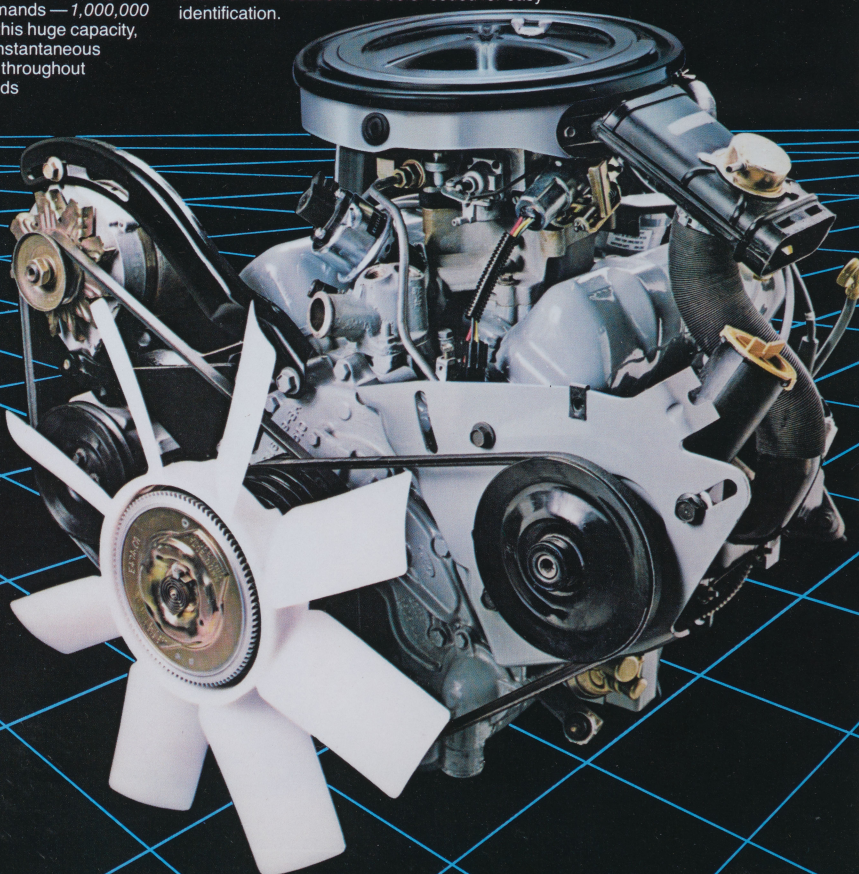
- **SELF-TEST** — to aid in system diagnosis.

- **SPARK CONTROL** — for precise ignition timing throughout the range of engine operation.
- **BATTERY CHARGE CONTROL** — to allow a smaller, space- and weight-saving alternator.
- **PROGRAMMED CHOKE CONTROL** — for accurate choke shutoff.
- **KNOCK SENSOR** — Instantaneously programs the spark timing to assure optimum fuel economy without engine knock.
- **"KEEP ALIVE" MEMORY** — to adjust engine functions based on component wear.

Carburetion is another area of significance on the new V-6 engine. The two venturi setup utilizes small bores (barrels) for good idle control and idle quality in addition to a gas savings over a larger barrelled carburetor. There's also a feedback feature that aids in fuel metering and a temperature compensated accelerator pump for consistent engine operation.

Other V-6 engine features include the use of a standard oil filter common to all Ford engines and a large-capacity oil fill for good lubrication. All fluid check and fill locations are color coded for easy identification.

V6



FORD BRONCO II

FORD BRONCO II. ENGINEERED TOUGH FROM THE GROUND UP.

There are numerous features incorporated into Bronco II's design that help make it a thoroughly enjoyable vehicle to own and operate. Some will be noticeable immediately — like standard power steering and power brakes. Others are not so noticeable — like manual locking free-running front hubs and EEC-IV. Whether you notice it or not, there's a lot of solid Ford technology under Bronco II's shiny skin. And that's important because good looks are one thing but toughness is the backbone of a true 4x4. Bronco II gives you both.

Frame

Bronco II's ladder-type frame is built tough with five crossmembers and a special anti-corrosion coating. To help separate you from road vibrations, the body is isolated from the frame by ten tuned rubber mounts.

Twin-Traction Beam Independent Front Suspension

The independent design of this renowned front suspension system has proved its value on Ford 4x4s for years. It allows the front driving wheels to climb over bumps independently for an improved ride and better off-road control than conventional solid axle with leaf spring designs. Additional features include: "lubed-for-life" axle shaft U-joints, boot protected axle slip yoke and adjustable camber that can be set for specific vehicle usage.

Front Hubs (manual or optional automatic locking)

The standard manual locking hubs are the free-running type which means when you're not traveling in 4-wheel drive and the hubs are unlocked, the front axles and driveshaft remain motionless, reducing wear and tear. Additionally, the front hubs have a unique flange mount design which allows for easy wheelbearing service. For greater ease, order available automatic locking hubs that provide 4-wheel traction on demand from the comfort of the cab.

Driveshaft

The driveshaft slip yoke both front and rear are protected from the elements by rubber boots, allowing for a first-ever extended service interval of 30,000 miles.*

Steering Linkage

Bronco II's steering linkage uses rubber-filled ball sockets which eliminates the need for periodic lubrication.

Trailer Towing

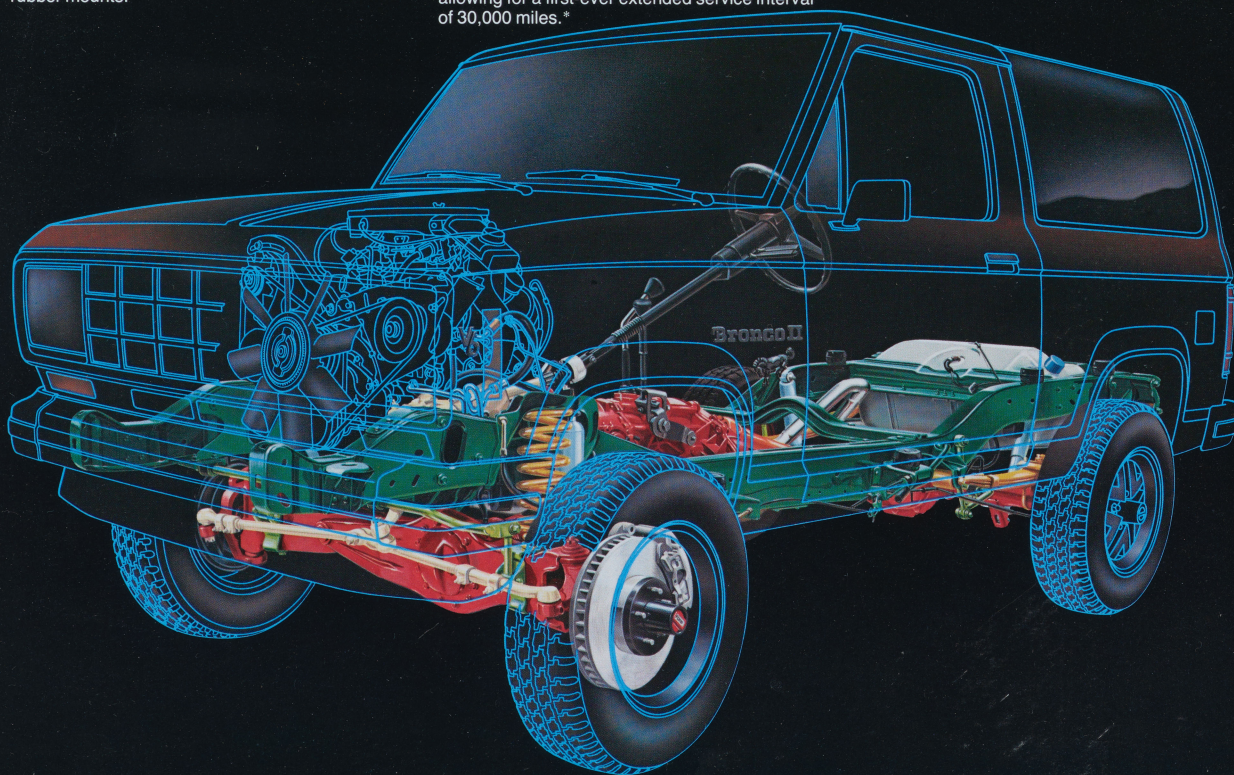
A properly equipped Bronco II can tow trailers up to 4,050 lb. Order the trailer towing package (see Options Selector for content) plus recommended heavy-duty battery and gauge package, and you're ready to roll.

Corrosion Protection

Bronco II utilizes electrocoat primer, zincrometal and galvanized metal in selected panels, full front plastic fender liners, aluminized wax and body sealers, special anti-corrosion frame coating, corrosion proof liftgate, and more.

These are just a sampling of the many features built into Bronco II that benefit you now and over the long haul. Be sure to make competitive comparisons, then make up your own mind as to just who is "taking charge."

*Check the owner's manual for other service intervals.



GREAT NEW LOOKS IN A GREAT NEW SIZE. THE NEW GENERATION FORD BRONCO II.

Whether you're an off-road enthusiast or you just like the security of 4-wheel drive in foul weather, Bronco II fills the bill and then some. With its all-new trim size and standard V-6 engine you get great maneuverability plus plenty of muscle to get you to those out of the way places the bigger guys can't go. And no matter which trim level you prefer, you'll be getting a tough, road-ready 4x4 vehicle for four passengers that doesn't scrimp on style.

Standard Bronco II. A well-equipped 4x4.

Take a walk around the standard Bronco II. The clean shape sits high and wide on 15-inch glass-belted radial tires. The one-piece wraparound liftgate raises all the way up out of your way providing easy access to the cargo area and a convenient

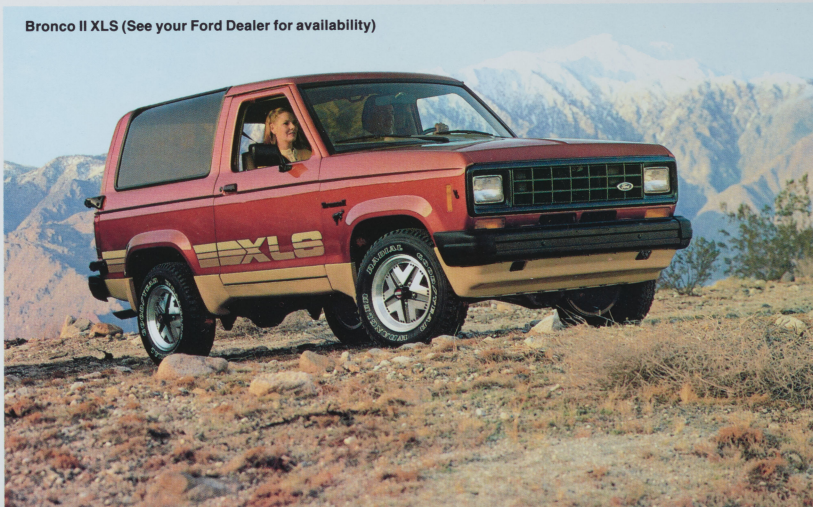
Standard Bronco II



Standard liftgate opens wide for easy access to the cargo area.



Bronco II XLS (See your Ford Dealer for availability)



Optional flip-up liftgate window offers convenient access for loading and unloading small packages.

BRONCO II

covered area, just in case the weather suddenly decides to rain on your parade. To help you see and be seen, Bronco II is equipped with large vertical taillights, halogen headlights and dual outside fold-away rearview mirrors. Black front and rear contour bumpers, black grille with bright surround and sport wheel covers polish off a mighty fine-lookin' 4x4.

Bronco II XLS. Lean, clean and slightly mean.

In full XLS trim you get special color schemes and "XLS" tape striping in three colors on the lower bodysides. The grille and grille surround are completely blacked out as are the bumpers and bumper end caps. But what really sets XLS apart from the

rest and gives it that heady 4x4 look are the unique rocker panel flare moldings.

Bronco II XLT. Whatever you do in XLT, you do in style.

The XLT trim level adds an air of refinement to Bronco II with bright bumpers and black end caps, chrome grille and bodyside accent stripe. XLT also comes equipped with pivoting front vent windows and deluxe wheel trim.

But don't stop there, you can choose from a long list of available options designed to personalize the exterior of any Bronco II. Features like the outside swingaway spare tire carrier add looks and versatility.

Order the flip-up liftgate window and get convenient access for small package loading and unloading. For performance, order the 5-speed manual overdrive transmission, or for convenience the 3-speed SelectShift automatic. Add the convenience of automatic locking hubs with a proven design. The possibilities are endless, but when you get off to such a good start with even the standard Bronco II, you don't have to go much farther to be way out in front of the pack.



FORD BRONCO II. A 4x4 AND A WHOLE LOT MORE.

Bronco II gives you more of what you're looking for in a compact-size family 4-wheeler. For starters, the split fold-down rear bench seat is standard in all three trim levels, so Bronco II is road-ready for a family of four from the word go. And that's not all.

Choose from three well-appointed trim levels.

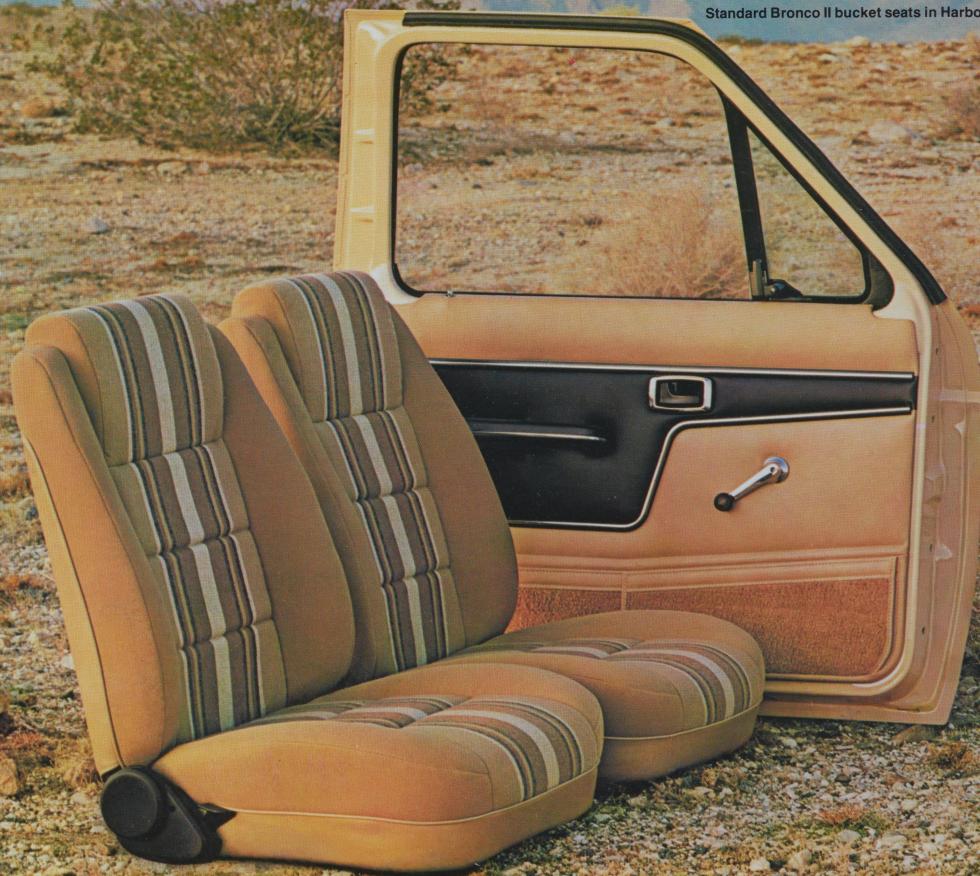
The standard Bronco II also comes equipped with reclining front bucket seats in knitted vinyl. Door trim panels are color-keyed soft vinyl with padded armrests. The rear compartment is also completely trimmed including armrests and liftgate trim. The carpeting is color-keyed and extends the full length of the passenger compartment and cargo area. Even the rear fold-down seat backs are carpeted for a completely tailored finish. Overhead are a full-length cloth headliner and dual color-keyed vinyl sun visors.

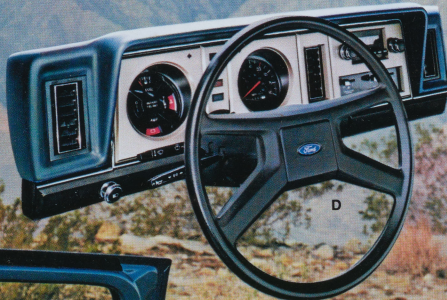
Bronco II XLT is the top-of-the-line edition that adds its own unmistakable flair and comfort with standard cloth and vinyl seat trim and full vinyl door trim panels with a map pocket, carpet insert and bright highlights. The instrument panel is color-keyed to the interior and a woodtone applique is added for richness. For convenience, driver and passenger door-operated courtesy light switches are included as is a liftgate-operated cargo area light. Rear quarter trim panels include integral padded armrests, speaker grilles and three storage compartments, one lockable.

Bronco II XLS is for the fun of it all. And the sporty fun-to-drive theme presented on the outside is carried over on the inside with a black thick soft-wrap sport steering wheel. And right up front sits a complete array of gauges for alternator charging, oil pressure and temperature, plus a resettable trip odometer.

XLT bucket seats in Desert Tan

Standard Bronco II bucket seats in Harbor Blue





A unique feature of Bronco II is the standard split fold-down rear bench seat. With it, you can fold both seats forward to use the total area for cargo, or fold only one seat forward for cargo and one passenger.

A. B. Standard split fold-down rear bench seat

C. Three additional storage compartments are standard in XLT rear quarter trim panels. They're just right for those smaller items you like to keep out of sight. And one is lockable for added security.

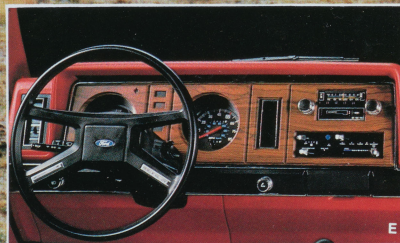
D. Standard instrument panel

E. XLT instrument panel.

F. Both driver and passenger seats recline for individual comfort.

G. New design flip-forward passenger seat makes rear seat entrance/exit a snap.

Bronco II . It's a 4x4 and a whole lot more.





BRONCO II SPECIFICATIONS

EQUIPMENT	STANDARD	OPTIONAL
Frame	Ladder type (five crossmembers)	
Axle, front	Twin-Traction Beam (2,750 lb.) w/adjustable camber	Limited slip
Axle, rear	2,500 lb.	Traction-Lok
Brakes	Power front disc/rear drum	—
Clutch	9 in. dia., hydraulic actuation, self-adjusting	—
Engine fan	Viscous type	—
Battery, maintenance-free	45 amp-hr.	63 amp-hr.
Alternator	40 amp.	—
Engine (displ.)	2.9 liter (2V) V-6	—
Fuel tank	23 gal. (87L)	—
Front hubs	Manual locking, free running	Auto-Locking
Shock absorbers	Double acting, telescopic front and rear	Heavy duty
Springs, front	Coil (1,970 lb.)	Computer selected
Springs, rear	Leaf (2,165 lb.)	Computer selected
Stabilizer bars	Front and rear	—
Steering	Power with "no-lube-linkage"	—
Transfer case (part-time)	2-speed	3-speed automatic, 5-speed manual
Transmission	4-speed manual (includes upshift indicator light)	—
Tires	Glass-belted (4) P195/75R-15SL (limited service spare)	Both glass- and steel-belted radials are available. Use adequate tires for type of service. Consult your Ford Dealer. Conventional spare included with optional swingaway spare tire carrier.
Wheels	Steel wheel with Sport Wheel Covers	Cast aluminum, styled steel painted white, argent, styled steel wheels w/black hub covers

BRONCO II DIMENSIONS

Leg Room	(front/rear)
Head Room	42.4"/35.2"
Hip Room	39.5"/38.5"
Shoulder Room	55.1"/42.1"
OAL	55.6"/56.7"
OAW	158.4"
OAH	68.0"
Wheelbase	69.0"
Track	94.0"
Axle Clearance	56.9"
Angle of approach	6.5"/6.9"
Angle of departure	29.5"
Ramp breakover angle	24.8"
Load floor liftover height	25.1"
Liftgate opening: Height	27.1"
Width (between wheel housings)	33.3"
Cargo Length	41.9"
Cargo Volume	21* with rear seat up 52.3* with rear seat down 25.6 cu. ft. with rear seat up 64.9 cu. ft. with rear seat down

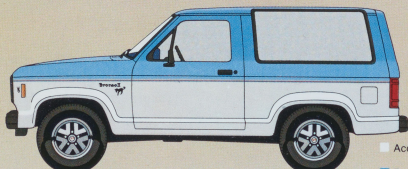
BRONCO II TRIM CONTENT

DESCRIPTION	STD. BRONCO II	BRONCO II XLT	BRONCO II XLS
Exterior			
Front and rear bumpers	Black	Bright Black	Black
Bumper end caps, front and rear	Black w/bright surround	Bright	Black
Grille	Steel with sport wheel covers	Argent styled steel wheels with black hub covers and bright trim rings	Black w/black surround
Wheel trim			Argent styled steel wheels with black hub covers and bright trim rings
Mirrors, black foldaway	STD	STD	STD
Door handles and locks, black	STD	STD	STD
Deep tinted wrapover rear quarter window and liftgate glass	STD	STD	STD
Tinted windshield and side door glass	OPT	STD	OPT
Tinted pivoting front vent windows	OPT	STD	OPT
Rocker panel flare moldings	NA	NA	STD
Windshield molding, black	NA	STD	STD
Liftgate, wraparound, corrosion resistant	STD	STD	STD
Interior			
Reclining front bucket seats with new flip-forward passenger seat feature	STD	STD (upgraded over standard)	STD
50/50 split fold-down rear seat with carpeted seat backs and seat cushion pull-straps	STD	STD (upgraded over standard)	STD
Knitted vinyl seat trim**	STD	NA	STD
Cloth and vinyl seat trim**	OPT	STD	OPT
Seat belts	Black	Deluxe, color-keyed with tension eliminator	Black
Carpeting, color-keyed, full length	STD	STD	STD
Door trim panels, color-keyed soft vinyl	STD	STD (full panel w/bright surround)	STD
Map pocket and carpet insert on lower door trim panel, color-keyed	NA	STD	NA
Armrests	Color-keyed	Black w/bright insert STD (with 3 storage compartments)	Color-keyed
Rear quarter trim panels, color-keyed washtrays and padded armrests	STD	STD	STD
Liftgate trim panel, color-keyed	STD	STD	STD
Headliner, full-length color-keyed cloth	STD	STD	STD
Sun visors, color-keyed vinyl (LH, RH)	STD	STD	STD
Coat hooks, color-keyed (4)	STD	STD	STD
Passenger assist handles, color-keyed (four — one each over front doors and rear passenger seats)	STD	STD	STD
Instrument panel w/color-keyed pad and lower panel	Bronzestone instrument cluster applique	Woodtone instrument cluster applique	Bronzestone instrument cluster applique
Steering wheel	Deluxe, black	Deluxe, black	Soft-wrap sport wheel, black
Gauge package (includes ammeter, oil pressure and temperature gauges plus trip odometer)	OPT	OPT	STD
Cigarette lighter	OPT†	STD	OPT†
Locking glove compartment and instrument panel storage bin	STD	STD	STD
Dome light	STD	STD	STD
Courtesy light switch, driver door operated	STD	STD	STD
Courtesy light switch, passenger door operated	OPT*	STD	OPT*
Cargo area light liftgate operated	OPT*	STD	OPT*
Spare tire cover, color-keyed	STD	STD	STD
Rearview mirror, day/night	STD	STD	STD
Cowl side trim panels and garnish moldings, color-keyed	STD	STD	STD
Scuff plates (liftgate — black, doors — bright)	STD	STD	STD

*Included with optional Light Group. **Seat trim available in four color choices: Black, Medium Red, Harbor Blue, Desert Tan.

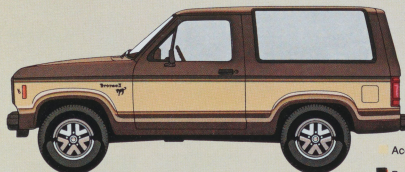
†Included with optional Convenience Group.

Tu-Tone Paint



■ Accent Color
■ Body Color

Regular Tu-Tone. Accent color applied to the lower bodyside/liftgate below the chamfer. Includes two-color tape stripe at the Tu-Tone break.



■ Accent Color
■ Body Color

Deluxe Tu-Tone. Accent color applied to mid-bodyside/liftgate below the chamfer and above the rocker area. Includes two-color tape stripe at the Tu-Tone breaks.

Printed colors are at best only representative of the true paints. Your Ford Dealer can show you actual samples of paint colors and also interior trim materials.

FORD BRONCO II OPTIONS.



Appearance

- ☐ Chrome grille (std. on XLT/NA on XLS)
- ☐ Tu-Tone paints (see illustration)
- ☐ Sport tape stripe

Audio Systems

- ☐ AM monaural radio (includes dual speakers)
- ☐ AM/FM monaural radio (includes dual speakers)
- ☐ AM/FM stereo radio*

A AM/FM stereo radio with cassette tape player*

*includes four speakers.

Comfort/Convenience

- B** Air conditioning. Tinted glass recommended.
 - ☐ Tinted glass (std. on XLT)
 - ☐ Convenience Group. Includes interval windshield wipers, visor vanity mirror, cigarette lighter and dual electric horns.
 - ☐ Light Group. Includes glove box, ashtray and cargo area light, passenger door courtesy light switch, and "headlights on" warning buzzer.
 - ☐ Fingertip speed control
- C** Tilt steering wheel
 - ☐ Flip-open liftgate window
 - ☐ Pivoting front vent windows (std. in XLT)
 - ☐ Privacy Glass™
 - ☐ Floor console. Includes Gauge Package, trash bin, cassette tape tray, coin tray two cup depressions and Electronic Graphic Warning Display Module.
 - ☐ Overhead console. Includes digital clock and pivoting map light.
- D** Bright, low-mount western swingaway mirrors
- E** Outside swingaway spare tire carrier. Includes full-size tire that matches road tires, vinyl cover, lock and standard wheel.
 - ☐ Rear seat delete
 - ☐ Carpet delete (includes black mat)

Performance

- F** SelectShift automatic transmission
- G** 5-speed manual overdrive transmission
- H** Automatic locking hubs
 - ☐ Engine block heater
 - ☐ Super engine cooling
 - ☐ HD maintenance-free battery
 - ☐ HD air cleaner
 - ☐ Gauge Package. Includes ammeter, temperature and oil pressure gauges plus resettable trip odometer.
 - ☐ HD shock absorbers, front and rear
 - ☐ Snow Plow Special Package. Includes HD shock absorbers, front and rear, HD front springs with air bags, HD rear springs and HD alternator.
 - ☐ Trailer Towing Package. Includes super engine cooling, trailer tow wiring harness, HD flasher, auxiliary transmission oil cooler when automatic transmission is ordered.
 - ☐ Traction-Lok axle (front "limited slip" and rear)
 - ☐ Traction-Lok axle (rear only)
 - ☐ California emissions system
 - ☐ High altitude emissions system

Protection

- ☐ Exterior Protection Group. Includes bright front and rear bumpers with black end caps, black front bumper guards, black upper bodyside molding (NA with XLS).
- ☐ Bright front and rear bumpers. Includes black end caps.
- ☐ Transfer case skid plate (included with manual transmission)

Wheels

- I** Cast aluminum wheels (4 with steel spare)
- J** White sport styled steel wheels (4 with steel spare)
- K** Deluxe wheel trim. Includes argent styled steel wheel with bright trim ring, lug nuts and black hub cover. (included with XLT and XLS)

Options Availability

Bronco II options are not confined to these pages but are shown throughout the catalog. Options, whether or not they are identified, are offered at extra cost. Some options are included, required, or are not available, in combination with other options. Availability of some models and features described here and elsewhere may be subject to a delay. Consult your Ford Dealer.

Exterior Colors

Medium Yellow	Bright Blue
Bright Bittersweet	Medium Blue Metallic
Candyapple Red	Midnight Blue Metallic
Bittersweet Glow*	Dark Spruce Metallic
Dark Brown Metallic	Raven Black
Desert Tan	Medium Grey Metallic
Light Desert Tan	Silver Metallic
Wimbledon White	

*Extra cost
glow color 11

Ford Paid Repair Programs After The Warranty Period

Sometimes Ford offers adjustment programs to pay all or part of the cost of certain repairs. These programs are intended to assist owners and are in addition to the warranty or to required recalls. Ask Ford or your dealer about such programs relating to your Ford or Lincoln-Mercury vehicle.

To get copies of any adjustment program for your vehicle or the vehicle of interest to you:

Call Ford toll-free at 1-800-241-3673.
Alaska and Hawaii call 1-800-243-3711
and in Georgia call 1-800-282-0959.

Or write Ford at: Ford Customer Information System,
Post Office Box 95427, Atlanta, Georgia 30347.

We'll need your name and address; year, make, and model vehicle, as well as engine size; and whether you have a manual or automatic transmission.

Technical Service Bulletins

All vehicles need repairs during their lifetime. Sometimes Ford issues Technical Service Bulletins (TSBs) and easy-to-read explanations describing unusual engine or transmission conditions which may lead to costly repairs, the recommended repairs, and new repair procedures. Often a repair now can prevent a more serious repair later. Ask Ford or your dealer for any such TSBs and explanations relating to your Ford or Lincoln-Mercury vehicle.

To get copies of these Technical Service Bulletins and explanations for your vehicle or the vehicle of interest to you:
Call Ford toll-free at 1-800-241-3673.

Alaska and Hawaii call 1-800-243-3711
and in Georgia call 1-800-282-0959.

Or write Ford at: Ford Customer Information System,
Post Office Box 95427, Atlanta, Georgia 30347.

We'll need your name and address; year, make, and model vehicle, as well as engine size; and whether you have a manual or automatic transmission.

"ASK YOUR FORD DEALER"

Following publication of this catalog, certain changes in standard equipment, options, prices and the like, may have occurred which would not be included in these pages. Your Ford Dealer is your best source for up-to-date information.

Specifications, descriptions and illustrative material contained herein were as accurate as known at the time this publication was approved for printing. Ford Division reserves the right to discontinue models or options at any time or change specifications and materials, equipment or design without notice and without incurring obligation. All options and accessories illustrated or referred to as optional or available in this publication are at extra cost. Some options are required in combination with other options. For the price of the model with the equipment you desire or verification of specifications contained herein, see your Ford Dealer.

Many of the items shown on vehicles in this publication are available through retail organizations and establishments not connected with Ford Motor Company. Availability, price, quality and durability of these items rest solely with the respective manufacturers and their sales organizations and Ford assumes no responsibility for their use.

1983 Ford Lifeguard Design Safety Features Vehicle Operation

- Dual service hydraulic brake system with warning light
- Front disc brakes
- Hazard warning flasher
- Two-speed or variable-speed windshield wipers
- Safety hood latch system

Occupant Protection

- Safety door latches and hinges
- Integral lap and shoulder belts with automatic retractors for front occupants
- Positive seat belt fastening reminder warning light and buzzer for the driver
- Lap belts with buckles for rear seating positions
- Energy-absorbing steering column and steering wheel
- Energy-absorbing instrument panel with padding for front passengers
- Impact-absorbing laminated safety glass windshield
- Flame resistant interior materials

Anti-Theft

- Locking steering column with key warning buzzer reminder
- Visible vehicle identification number
- Separate keys for ignition and door entry



**Buy or lease Ford Bronco II.
Go for a test drive today.**

Get it together — Buckle up.

FORD BRONCO II

FORD DIVISION

