

1986 FORD BRONCO II

Best-Built American Trucks—Built Ford Tough





Eddie Bauer Bronco II, named after the world-famous maker of outdoor gear, includes special Eddie Bauer trim and convenience features. Plus the "Ford Care" extended maintenance and limited warranty program.



Bronco II XLT features deluxe-level trim inside and out. Plus an impressive list of added conveniences. A standard stereo system, too. This Bronco II is a complete vehicle, with the features drivers prefer.

Ford Bronco II for 1986



Ford Bronco II, the standard model, offers built-tough Ford engineering and a great list of features in a compact utility vehicle, yours in the fun-to-drive 4x4 model or the new 4x2.*

Ford Bronco II... from the maker of the best-built American trucks

A 1985 survey of owners has established that Ford makes the best-built American trucks. This is based on an average of problems reported by owners in the prior six months on 1981-84 models of all trucks designed and built in the United States. Proof again that, at Ford... Quality is Job 1.

Contents

Ford Bronco II Environment	4-5
Ford Eddie Bauer Bronco II	6
Ford Bronco II XLT	7
Ford Bronco II	8
Specifications and Dimensions	9
Ford Performance	10-11
Preferred Equipment Packages	12-13
Options and Color Selections	14-15
Safety and Owner Information	16-17

Some equipment shown on these pages may be optional. See options list on page 15.

*See your Ford Dealer for availability.



Ford Bronco II Environment



4-passenger comfort and convenience

Bronco II is roomy, comfortable, and exceptionally versatile. For its compact size, Bronco II provides plenty of room for four adult passengers. The reclining front bucket seats are body-contoured and have extended fore/aft travel for the comfort of taller passengers. And the seat belts have a comfort regulator feature that allows you to eliminate pressure on chest and shoulder.

A new feature in the '86 Bronco II is the tip-and-slide front passenger seat which provides more convenient access to the rear passenger area. The rear 50/50 seats are comfortable, too, and give you the option of folding down only one side if you need space for longer cargo. And you still have room for a third passenger.

The new 3-passenger 60/40 split bench front seats with tip/slide feature are available in the Standard and XLT series. Combined with the new optional Touch-Drive electric shift transfer case in the 4x4, these seats offer you a five-passenger Bronco II with added foot room for the center front passenger because the transfer case shift controls are conveniently located in an overhead console.

Bronco II ergonomics

In Bronco II, applied ergonomics creates a close relationship between you and the vehicle. Bronco II has an ergonomically designed instrument panel for your convenience when you're behind the wheel. Instruments, centrally located, are easy to read. Controls are easy to reach, some right at your fingertips on column-mounted levers.

Proper ventilation is important, too. Bronco II's high-low flow-through ventilation system and 4-speed fan provide multi-directional airflow through four registers on the instrument panel. And three defroster ducts help clear the windshield quickly and completely.

Spacious cargo area and easy-opening liftgate

Bronco II provides plenty of space for just about anything you need to carry. With four passengers seated, you have 21.1 inches of load floor length and 25.6 cu. ft. of cargo volume. But when you

fold the rear seat backs down, the load floor length increases to 52.5 inches and the cargo volume to 64.9 cu. ft. That's Bronco II versatility for you!

Access to the cargo area is easy in Bronco II. Liftgate opening height, measured from the load floor, is 34.3 inches. And the liftover height from the ground to the load floor is just 29.5 inches. The one-piece wraparound liftgate, made of lightweight, non-corrosive fiberglass, raises all the way up and out of the way, and can provide you added protection when you're loading or unloading in inclement weather conditions.

Special Bronco II options

Bronco II offers a wide range of options for your comfort and convenience. For the Bronco II 4x4, you have the push-button convenience of the new "Touch-Drive" electric shift transfer case. Order the optional flip-up liftgate window which offers quick access for loading and unloading groceries or small packages. Let in more fresh air through the tilt-up/open-air roof. Available also are popular features such as the dual Captain's Chairs (standard in Eddie Bauer Bronco II), new 60/40 split bench front seats (with Standard and XLT trim), power window/door lock group, speed control with tilt steering wheel, window shade-type cargo area cover, and many more.



Eddie Bauer interior. Some equipment shown on these pages may be optional. See options list on page 15.



Ford Eddie Bauer Bronco II

Named for its toughness and style

The Eddie Bauer Bronco II is distinguished by its unique Two-Tone paint treatment with accent stripes (four combinations), plus cast aluminum wheels on P205 RWL all-season steel-belted tires.

Inside, dual Captain's Chairs in "Eddie Bauer" chestnut color are trimmed with special cloth and vinyl fabric. Entertainment is provided by the standard electronic AM/FM stereo radio. A tilt steering wheel with speed control is included, too, along with interval wipers, passenger visor mirror, Privacy® glass quarter windows, plus the XLT-level trim features on the next page. Also, special Eddie Bauer garment and tote bags (both in dark blue with tan leather accents) are shipped directly from Eddie Bauer.

And you get the "Ford Care" extended maintenance and limited warranty program, which provides coverage for up to 24 months or 24,000 miles. Ask to see this warranty when you visit your dealer.





Ford Bronco II XLT

Equipped with the features you prefer

The XLT trim series offers you an exceptionally well-equipped Bronco II. The bucket seats are upholstered in cloth and vinyl. Full cloth door trim panels include map pockets, carpeted lower sections, and bright accents. You get an electronic AM/FM stereo radio, a new tachometer cluster, driver and passenger door courtesy lights, ashtray light, glove box light, lighted engine compartment, "headlamps-on" warning chime and cargo area light, front vent windows and interval wipers, plus added sound insulation.

Exterior trim includes a chrome bumper with black rub strips, chrome grille insert, accent tape stripes (upper bodyside and liftgate), deluxe wheel trim and bright low-mount western swingaway mirrors.

Bronco II XLT for 1986. It's equipped for your driving enjoyment, whether you're traveling around town in the new 4x2 model* or having fun off-road in the 4-wheeler.

Some equipment shown on these pages may be optional. See options list on page 15.

*See your dealer for availability.





Standard Ford Bronco II

Setting high standards of value

The standard Bronco II offers outstanding value in a well-equipped compact utility vehicle. The reclining front bucket seats are trimmed in knitted vinyl. An AM radio is standard (may be deleted for credit), as well as gauges indicating alternator charging, oil pressure and temperature. A handy trip odometer is included, too.

The carpeting is color-keyed and extends full length. Even the rear fold-down seat backs are carpeted. And you get full-length cloth headliner and color-keyed vinyl sun visors.

The exterior features halogen headlamps, black dual outside foldaway rearview mirrors, bright front and rear contour bumpers with black rub strips, and sport wheel covers. Tinted glass is standard, with deep-tinted wrapover rear quarter windows and liftgate glass.

Bronco II offers more than what you might expect in a standard vehicle. And that means value.

Some equipment shown on this page may be optional. See options list on page 15.



Ford Bronco II Specifications

On the preceding pages, we've shown you the selection of attractive trim series available with Bronco II. Now, beginning with this page, we want to acquaint you with the technical side of Bronco II — the facts and figures that add up to one tough truck.

SPECIFICATIONS

		4x2*	4x4
GVWR	Max.	Computer-selected	Computer-selected
Frame	Std.	Ladder-type	Ladder-type
Axle, front	Std.	Twin-I-Beam, 2,500 lbs.	Twin-Traction Beam, 2,750 lbs.
Axle, rear	Std.	2,640 lbs.	2,640 lbs.
	Opt.	Limited Slip	Limited Slip
Brakes	Std.	Power-assisted	Power-assisted
Clutch	Std.	9-in. dia. self-adjusting	9-in. dia. self-adjusting
Transfer case (part-time)	Std.	—	2-speed, manual shift (manual locking front hubs, free-running)
	Opt.	—	"Touch-Drive" electric (automatic locking hubs)
Engine fan	Std.	Viscous-type	Viscous-type
Electrical:			
Battery (amp-hr.)	Std.	71 (maintenance-free)	71 (maintenance-free)
Alternator (amp)	Std.	40	40
Fuel tank (gals.)	Std.	23	23
Shock absorbers	Std.	Dual-acting telescopic, front and rear	Dual-acting telescopic, front and rear, gas-pressurized
Springs, front	Std.	Coil, 1,750 lbs.	Coil, 1,970 lbs.
	Opt.	Computer-selected	Computer-selected
Springs, rear	Std.	Leaf, 2,367 lbs.	Leaf, 2,177 lbs.
	Opt.	Computer-selected	Computer-selected
Stabilizer bars	Std.	Front and rear	Front and rear
Steering	Std.	Power-assisted	Power-assisted
Wheels	Std.	15x6.0J steel wheels with sport wheel covers	15x6.0J steel wheels with sport wheel covers
	Opt.	Cast aluminum; White styled steel	Cast aluminum; White styled steel
Tires	Std.	(4) P195/75R15SL all-season steel-belted (limited service spare)	(4) P195/75R15SL all-season steel-belted (limited service spare)
	Opt.	Optional size and tread design steel-belted radials are available. Use adequate tires for type of service. Consult your Ford Dealer. Full-size conventional spare tire is included with optional swingaway spare tire carrier.	

*See your Ford Dealer for availability.

POWERTEAMS

Engine	Transmission	Final Drive Ratios		
		49 States	California	High Altitude
4x2* 2.9L V-6 EFI+	Manual	3.45	3.45	3.45
	5-speed OD	3.73 LS	3.73 LS	3.73 LS
	Automatic	3.73	3.73	3.73
	4-speed OD	4.10 LS	4.10 LS	4.10 LS
4x4 2.9L V-6 EFI+	Manual	3.45	3.45	3.73
	5-speed OD	3.73 LS	3.73 LS	3.73 LS
	Automatic	3.73	3.73	3.73
	4-speed OD	4.10 LS	4.10 LS	4.10 LS

LS = Limited Slip.

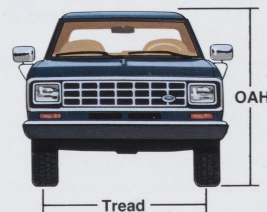
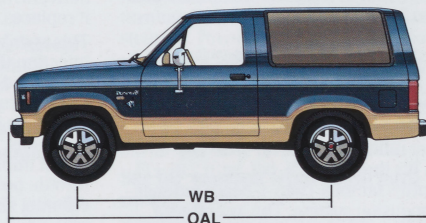
*See your Ford Dealer for availability.

+Electronic Fuel Injection.

DIMENSIONS

	4x2* (front/rear)	4x4 (front/rear)
Leg room	42.2"/35.2"	42.2"/35.2"
Head room	39.5"/38.5"	39.5"/38.5"
Hip room	54.8"/44.1"	54.8"/44.1"
Shoulder room	55.5"/56.7"	55.5"/56.7"
Overall length (OAL)	158.2"	158.2"
Overall width (OAW)	68.0"	68.0"
Overall height (OAH)	68.2"	68.4"
Wheelbase (WB)	94.0"	94.0"
Front overhang	28.2"	28.2"
Rear overhang	36.0"	36.0"
Tread	56.9"/56.9"	56.9"/56.9"
Axle clearance	—/6.5"	6.3"/6.5"
Angle of approach	—	29.3
Angle of departure (loaded)	—	24.7
Ramp breakover angle (loaded)	—	24.1
Ground clearance at		
transfer case (unloaded)	—	9.3"
Load floor liftover height	29.5"	29.5"
Liftgate opening height	34.3"	34.3"
Width (between wheelhouses)	41.9"	41.9"
Cargo length — rear seat up	21.2"	21.2"
— rear seat down	52.5"	52.5"
Cargo volume — rear seat up	25.6"	25.6"
— rear seat down	64.9"	64.9"

*See your Ford Dealer for availability.



Ford Performance



New "Touch-Drive" electric shift transfer case (4x4).

Ford is America's truck

Ford has been the first in total truck sales for the past 16 years.* There are many reasons why, and performance is certainly at the top of the list. On these pages are some of the performance features that make Ford America's truck.

*Based on cumulative R. L. Polk & Company registrations from 1969 through May 1985.

New Bronco II 4x2 model**

Now there's a Bronco II for those who want a tough compact utility truck for on-road use around town. It's the Bronco II 4x2, with 2.9L EFI engine and Ford's famous Twin-I-Beam independent front suspension system. The 4x2 offers a new way to go in Bronco II for 1986.

**See your Ford Dealer for availability of the 4x2 model.

New standard 2.9 liter EFI V-6 performance in Bronco II 4x4 and new 4x2**

The standard 2.9L electronically fuel-injected V-6 engine with 5-speed manual transmission delivers more performance than the 2.8L 2V V-6 it replaces.

This new V-6 features a multi-port electronic fuel injection (EFI) system controlled by the Ford-developed EEC-IV onboard computer. The precise amount of fuel is delivered to each cylinder's intake port as the EEC-IV computer processes, by the second, thousands of sensor-fed bits of information related to conditions such as throttle position, engine coolant temperature, air volume, air temperature and barometric pressure. This advanced EFI/EEC-IV system helps provide more precise fuel distribution and more complete combustion than would be possible with conventional carburetion. The results are improved fuel economy, increased performance, plus smooth running and easy starting, even in very hot or cold temperatures.

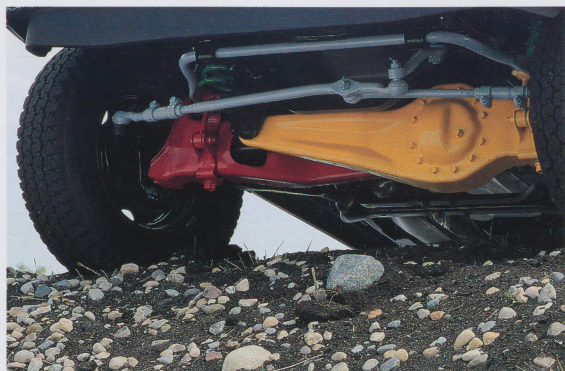
Automatic Overdrive transmission

The optional Automatic Overdrive transmission, available with the 2.9L V-6, has four speeds with overdrive fourth gear and an electronically controlled converter clutch. The converter clutch automatically engages during steady-speed operation in fourth gear and the upper range of third gear, improving fuel economy by eliminating torque converter slippage. This also provides smooth, quiet operation during highway travel.

Manual locking 4x4 hubs

For serious 4x4 enthusiasts, the standard free-running front hubs are the manual locking type. In 2-wheel drive with the hubs unlocked, the front axles and driveshaft remain motionless, reducing friction and wear. With the wheel hubs locked, you can shift "on the fly" from 2-wheel high to 4-wheel high and back to suit your driving conditions.

With the manual locking hubs, transfer case lubrication is provided by a constant-displacement hydraulic oil pump. With the transmission and transfer case in neutral (N) and the manual locking hubs in the free position, Bronco II can be towed for unlimited distances at speeds up to 55 mph. You do not have to disconnect the driveshafts or lift the front or rear wheels off the ground. Not all 4x4 vehicles have this capability.



Twin-Traction Beam independent front suspension on Bronco II 4x4 (Twin-I-Beam suspension on the new 4x2).

New "Touch-Drive" electric shift transfer case option (4x4)

Shifting "on the fly" between 2-wheel drive high to 4-wheel drive high and back is done with one-touch push-button ease with the new optional "Touch-Drive" electric shift transfer case — a Ford exclusive 4x4 feature available in Bronco II for 1986.

This system will shift between 2-high and 4-high at any speed. And it features two special electrical interlocks designed to prevent possible power-train damage caused by a mis-shift between 4-high and 4-low. Shifting into or out of 4-low is only possible when the vehicle is stopped or moving below 3 mph with the automatic transmission in the neutral position or when the manual transmission clutch disengages. "Touch-Drive" also utilizes an innovative magnetic clutch that spins up the front drive system from zero to vehicle speed in milliseconds, engaging the automatic locking hubs instantly.

The "Touch-Drive" system offers other important advantages as well. You have more room for the center front passenger on the optional 60/40 split bench front seats (with Standard or XLT trim) because there's no floor-mounted shift lever. The push-button controls (one for 2-high and 4-high, another for 4-low) are located in a convenient overhead console, which features dual reading lamps.

And, best of all, the "Touch-Drive" contributes to fuel efficiency because the axle shaft, drive-shaft and transfer case chain are stationary in the 2-wheel-drive mode with the hub locks disengaged.

Gas mileage

1986 EPA mileage estimates were not available at the time this catalog was approved for printing. As soon as EPA figures are released, your Ford Dealer will be among the first to receive this information and will be happy to pass it along to you.

New 4x2 with Twin-I-Beam independent front suspension**

Like the compact Ranger and big F-Series pickups, Bronco II 4x2 features the Twin-I-Beam independent front suspension system. Each wheel has its own forged I-beam axle and hefty coil spring. So it's engineered to withstand rugged everyday use, day in and day out. And the ride is smooth because the wheels step over bumps independently.

Rugged 4x4 with Twin-Traction Beam independent front suspension

Bronco II 4x4's Twin-Traction Beam front suspension allows each front driving wheel to handle rough off-road conditions independently. The ride is less jarring and control is better than what you'd experience in a vehicle having a conventional front leaf spring with single axle design.

Bronco II maneuverability

With its compact size, precision-tuned suspension system, high ground clearance and angles of approach, Bronco II has great maneuvering capability. And Bronco II has a tight curb-to-curb turning diameter combined with standard power steering. Power brakes are also standard.

New mud-gripping P205 off-road tires

A newly developed off-road tire is available on Bronco II 4x4. In a special mud traction test, the new tread design proved superior to the current all-terrain tires.

See for yourself what "Built Ford Tough" means

Whatever your trucking needs—work vehicle, pleasure vehicle or a combination of the two—your Ford Dealer can fit them to a "T." And you'll have a rugged performer in America's truck—the one that's built Ford Tough!

A Well-Equipped Bronco II

The **Bronco II XLT** pictured below illustrates the high level of standard equipment in this series. It is Preferred Equipment Package 923A, with the kinds of features that have proved popular with many truck buyers.

Bronco II XLT (with Preferred Equipment Package 923A):

- Twin-I-Beam independent front suspension (4x2)
- Twin-Traction Beam independent front suspension with heavy-duty shock absorbers (4x4)
- Fuel tank/transfer case skid plates (4x4)
- Manual locking hubs (4x4)
- Halogen headlamps
- Tinted glass
- Deep-tinted rear quarter windows and liftgate glass
- Color-keyed passenger and cargo area carpeting
- Dual split-fold rear seats
- Carpeted rear seat backs
- Ammeter, oil pressure and engine temperature gauges
- Trip odometer
- Color-keyed cloth headliner
- Color-keyed vinyl sun visors
- 2.9L EFI V-6 engine
- 5-speed manual transmission
- Light Group (see next page for contents)
- Interval windshield wipers
- Bright low-mount western swing-away mirrors
- Tachometer
- Deluxe Two-Tone paint
- Privacy® glass (quarter windows only)
- Speed control/tilt steering wheel
- Electronic AM/FM stereo radio
- Cloth and vinyl reclining front bucket seats
- Deluxe wheel trim
- P195/75R15SL BSW all-season steel-belted radial tires (optional P205 off-road tires shown at right)
- XLT trim (see page 7)



Preferred Equipment Packages

Ordering your Bronco II is easy with Preferred Equipment Packages. Here's how it works: (1) Choose your trim level (Standard, XLT or Eddie Bauer). (2) Select the Preferred Equipment Package with the features you want from the chart below. (3) Choose additional options on page 15. The entire ordering procedure is greatly simplified. Contents of Preferred Equipment Packages are subject to change. For the latest information, including packages for the new Bronco II 4x2 when it's available, consult your Ford Dealer.



BRONCO II 4X4 (1)	PREFERRED EQUIPMENT PACKAGES					
	Standard Trim		XLT Trim		Eddie Bauer	
	920A	921A	922A	923A	925A	926A
2.9 liter EFI V-6 engine	•	•	•	•	•	•
5-speed manual transmission	•	•	•	•	•	•
Light Group (2)	•	•	•	•	•	•
Interval windshield wipers	•	•	•	•	•	•
Bright low-mount swingaway mirrors	•	•	•	•	•	•
Tachometer	•	•	•	•	•	•
Deluxe Two-Tone paint	•	•	•	•	•	•
Privacy glass (quarter windows only)	•	•	•	•	•	•
Speed control/tilt steering wheel	•	•	•	•	•	•
AM radio (may be deleted for credit)	•	•	•	•	•	•
Electronic AM/FM stereo radio	•	•	•	•	•	•
Electronic AM/FM stereo radio with cassette tape player	•	•	•	•	•	•
Knitted vinyl reclining bucket seats	•	•	•	•	•	•
Cloth/vinyl reclining bucket seats	•	•	•	•	•	•
Cloth/vinyl dual Captain's Chairs	•	•	•	•	•	•
Power windows and door locks	•	•	•	•	•	•
Swingaway spare tire carrier/cargo cover	•	•	•	•	•	•
Rear window defroster/wiper-washer	•	•	•	•	•	•
Deluxe wheel trim	•	•	•	•	•	•
Cast aluminum wheels	•	•	•	•	•	•
P195/75Rx15SL BSW all-season steel-belted radial tires	•	•	•	•	•	•
P205/75Rx15SL RWL all-season steel-belted radial tires	•	•	•	•	•	•

(1) See your dealer for the Bronco II 4x2 Preferred Equipment Packages.

(2) Includes lights for ashtray, glove box, cargo area, engine compartment, plus headlamps-on warning buzzer.

Ford Bronco II Options

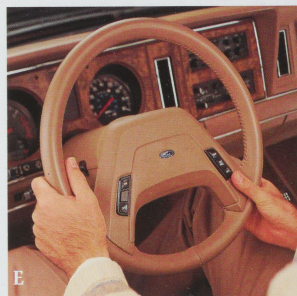
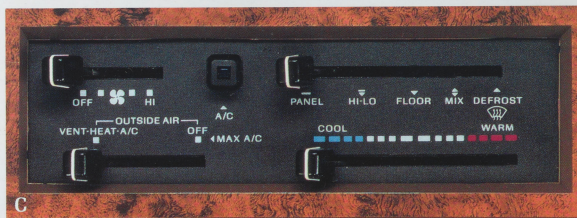
In addition to the Preferred Equipment Packages, Bronco II offers a range of individual options which let you equip your vehicle even more to your exact needs. Options and their availability are subject to change during the year. Your Ford Dealer can advise you of current status.

New "Touch-Drive" 4x4 electric shift transfer case

If the Bronco II you select has 4-wheel drive, you'll definitely want to consider the new "Touch-Drive" electric shift transfer case option. The "Touch-Drive" system offers push-button shift convenience along with the many other benefits described on pages 10-11. It's yours in Bronco II 4x4 with any trim series.

Electronic AM/FM stereo sound system with cassette tape player

Among the features of this state-of-the-art electronic stereo system are Dolby® noise reduction, seek tuning that selects the next listenable station either up or down scale, scan tuning that auditions stations for up to 8 seconds, and "program search" that locates the beginning of the next or previous selection on the cassette tape.



Illustrated options: (A) "Touch-Drive" electric shift 4x4 transfer case. (B) Electronic AM/FM stereo radio with cassette tape player. (C) Air conditioner. (D) Swingaway spare tire cover. (E) Speed control and tilt steering wheel. (F) Cast aluminum wheel. (G) White sport styled steel wheel.

Options Availability

Once you've chosen the model and Preferred Equipment Package you desire, you may want to add optional equipment. Find your Preferred

Equipment Package number below, then choose from the options listed under it. Some options may be subject to ordering restrictions.

	PREFERRED EQUIPMENT PACKAGES					
	Standard Trim		XLT Trim		Eddie Bauer	
	920A	921A	922A	923A	925A	926A
BRONCO II 4x4 (1)						
Air conditioning	■	■	■	■	■	■
"Touch-Drive" electric shift 4x4	■	■	■	■	■	■
Automatic Overdrive transmission	■	■	■	■	■	■
Speed control/tilt steering wheel	■	■	■	●	●	●
Cloth/vinyl reclining bucket seats	■	■	●	●	●	●
Cloth/vinyl dual Captain's Chairs	■	■	■	■	●	●
Cloth/vinyl 60/40 split bench seat	■	■	■	■	■	■
Floor console	■	■	■	■	■	■
Overhead console	■	■	■	■	■	■
Power windows and door locks	■	■	■	■	■	●
Electronic AM/FM stereo radio	■	■	●	●	●	■
Electronic AM/FM stereo radio with cassette tape player	■	■	■	■	■	●
Premium sound system (2)	■	■	■	■	■	■
Deluxe Two-Tone paint	■	■	■	●	■	■
Tilt-up/open air roof	■	■	■	■	■	■
Flip-up liftgate window	■	■	■	■	■	■
Rear window defroster/wiper-washer	■	■	■	■	■	●
Bright low-mount swingaway mirrors	■	■	●	●	●	●
Privacy glass (quarter windows only)	■	■	■	●	●	●
Luggage rack	■	■	■	■	■	■
Swingaway spare tire carrier/cargo cover	■	■	■	■	■	●
Snow plow special package (3)	■	■	■	■	■	■
Limited slip rear axle	■	■	■	■	■	■
Super engine cooling	■	■	■	■	■	■
Engine block heater	■	■	■	■	■	■
Cast aluminum wheels	■	■	■	■	●	●
White sport styled steel wheels	■	■	■	■	■	■
P195/75Rx15SL BSW all-terrain steel-belted radial tires	■	■	■	■	■	■
P205/75Rx15SL RWL all-season steel-belted radial tires	■	■	■	■	●	●
P205/75Rx15SL RWL off-road steel-belted radial tires	■	■	■	■	■	■
California emissions system	■	■	■	■	■	■
High altitude emissions system	■	■	■	■	■	■
● = Standard equipment						
■ = Optional equipment						

(1) See your dealer about optional equipment for the new Bronco II 4x2 model.

(2) Includes rear speakers and power amplifier.

(3) Includes heavy-duty frame, heavy-duty front springs with air bag, 60-amp alternator, SelectShift automatic transmission, auxiliary transmission oil cooler, 3.73 rear axle ratio, and P205/75Rx15SL RWL steel-belted radial tires.

Exterior Colors



Dark Grey
Metallic



Raven Black



Medium Silver
Metallic



Bright Canyon
Red



Dark Canyon
Red*



Light Regatta
Blue



Dark Shadow
Blue Metallic*



Colonial
White



Dark Walnut
Metallic*



Light Desert
Tan



Desert Tan
Metallic

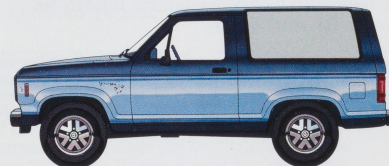


Dark Spurge
Metallic
(Eddie Bauer only)*

*Eddie Bauer Two-Tone color with Light Desert Tan.

Printed colors are at best only representative of the originals. Your Ford Dealer can show you actual samples of paint colors as well as interior trim materials.

Two-Tone



Deluxe Two-Tone Paint. Accent color is applied to mid-bodyside/liftgate below the chamfer and above the rocker area. Includes two-color tape stripe at the two-tone break.

Safety and Owner Information



Ford Motor Company strongly encourages all passengers to use their safety belts.

In Ford trucks, outboard front seat lap and shoulder belts have automatic retractors. Outboard rear seat positions (F-Series SuperCab and Crew Cab) also have lap belts with retractors.

Ford Motor Company recommends the use of child and infant restraints, as required in all states. Ford's easy-to-install Tot-Guard (for children 20 to 50 pounds) and Infant Carrier (for children up to 20 pounds) are available at all Ford Dealers. If a child restraint requires a top-tether, Ford trucks provide special anchorages.

Ford Lifeguard Design Safety Features

Vehicle operation

- Safety rim wheels and load-rated tires
- Split service hydraulic brake system with warning light
- Corrosion-resistant brake lines
- Turn indicator with lane-changing signal feature
- Hazard warning flasher
- Backup lights
- Side marker lights
- Parking lights coupled with headlamps
- Two-speed windshield wipers
- Windshield washers
- Outside rearview mirrors
- Glare-reduced instrument panel, windshield wiper arms and windshield pillars
- Uniform transmission shift quadrant with starting switch (on all vehicles equipped with automatic transmissions)
- Continuously variable control illumination intensity (instrument panel lighting)
- Safety hood latch system
- Function-rated windshield defroster system

Occupant protection

- Safety-designed front end structure
- Safety-designed roof structure
- Two-position door safety latches
- Integral lap and shoulder belts with automatic retractors for outboard occupants
- Positive seat belt fastening reminder warning light and buzzer or chime for the driver's seat
- Lap belts with retractors for rear seating positions
- Energy-absorbing steering column and steering wheel system
- Energy-absorbing armrests and safety-designed door handles
- Energy-absorbing instrument panel with padding
- Energy-absorbing sun visors
- Energy-absorbing front seat back tops
- Self-locking front seat back latches
- Head restraints for front occupants
- Safety glove box latch
- Inside yieldaway rearview mirror
- Impact-absorbing laminated safety glass windshield
- Flame-resistant interior materials
- Safety-designed coat hook
- Safety-designed radio control knobs and push buttons

"Ask your Ford Dealer"

Following publication of this catalog, certain changes in standard equipment, options, prices and the like, or product delays, may have occurred which would not be included in these pages. Your Ford Dealer is your best source for up-to-date information.



Participating Ford Dealers are now offering the Lifetime Service Guarantee, which guarantees their work on your Ford vehicle for as long as you own it. This means that the covered repair is paid for once-and never again. If it ever has to be fixed again, the repairing dealer will fix it free. Free parts. Free labor. Even if the car is kept a lifetime. It doesn't matter where it was purchased, or whether it's new or used; the work is still covered by the repairing dealer.

This limited warranty covers vehicles in normal use. Items not covered are routine maintenance parts, belts, hoses, sheet metal, and upholstery. Ask to see this guarantee when you visit your participating Ford Dealer.



The optional Extended Service Plan covers major components on new Ford cars and light trucks for longer than the vehicle's basic warranty. The cost of this added protection is so moderate that it could pay for itself the first time you need it. Your Ford Dealer has full details.



Genuine Ford and Motorcraft original equipment replacement parts meet the same high standards as those installed in production. They are your best assurance of quality and long-term satisfaction.

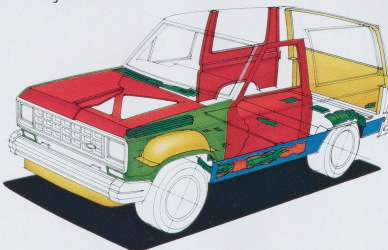
Scheduled maintenance

Here are some examples of scheduled maintenance intervals for the 1986 Bronco II. For complete maintenance recommendations, refer to the Bronco II Owner Guide.

Engine oil change	each 7,500 miles
Spark plug change	each 30,000 miles
Air filter replacement	each 30,000 miles
Engine coolant replacement	each 30,000 miles or 3 years

Special quality steps: Corrosion protection

Ford takes tough measures to protect its trucks against the damaging effects of corrosion. Galvanized steel is used for important underbody and structural parts. Pre-coated steel, featuring corrosion inhibitors, is also used in major body panels. Special treatments are applied to selected areas of the body structure.



- Plastic parts
- Galvanized metal
- Zinc-coated metal
- Aluminized wax
- Urethane anti-corrosion spray

Ford-paid repair programs after the warranty period

Sometimes Ford offers adjustment programs to pay all or part of the cost of certain repairs. These programs are intended to assist owners and are in addition to the warranty or to required recalls.

Ask Ford or your dealer about such programs relating to your Ford or Lincoln-Mercury vehicle.

To get copies of any adjustment program for your vehicle or the vehicle of interest to you: Call Ford toll-free at 1-800-241-3673. Alaska/Hawaii call 1-800-241-3711 and in Georgia call 1-800-282-0959.

Or write Ford at:

Ford Customer Information System
Post Office Box 95427
Atlanta, Georgia 30347

We'll need your name and address; year, make and model vehicle, as well as engine size; and whether you have a manual or automatic transmission.

Technical service bulletins

All vehicles need repairs during their lifetime. Sometimes Ford issues technical service bulletins (TSBs) and easy-to-read explanations describing unusual engine or transmission conditions which may lead to costly repairs, the recommended repairs, and new repair procedures. Often a repair now can prevent a more serious repair later. Ask Ford or your dealer for any such TSBs and explanations relating to your Ford or Lincoln-Mercury vehicle.

To get copies of these technical service bulletins and explanations for your vehicle or the vehicle of interest to you: Call Ford toll-free at 1-800-241-3673. Alaska/Hawaii call 1-800-241-3711 and in Georgia call 1-800-282-0959.

Or write Ford at:

Ford Customer Information System
Post Office Box 95427
Atlanta, Georgia 30347

We'll need your name and address; year, make and model vehicle, as well as engine size; and whether you have a manual or automatic transmission.

Options availability

Options shown or described in this catalog are available at extra cost and may be offered only in combination with other options or subject to additional ordering requirements or limitations.

Product changes

Ford Division reserves the right to change product specifications at any time without incurring obligations. It is important to note also that some of the items shown on vehicles in this publication are available through retail organizations and establishments not connected with Ford Motor Company. Availability, price, quality and durability of these items rest solely with the respective manufacturers and their sales organizations, and Ford assumes no responsibility for their use.

Buy or lease a new Ford Bronco II



FORD BRONCO II

