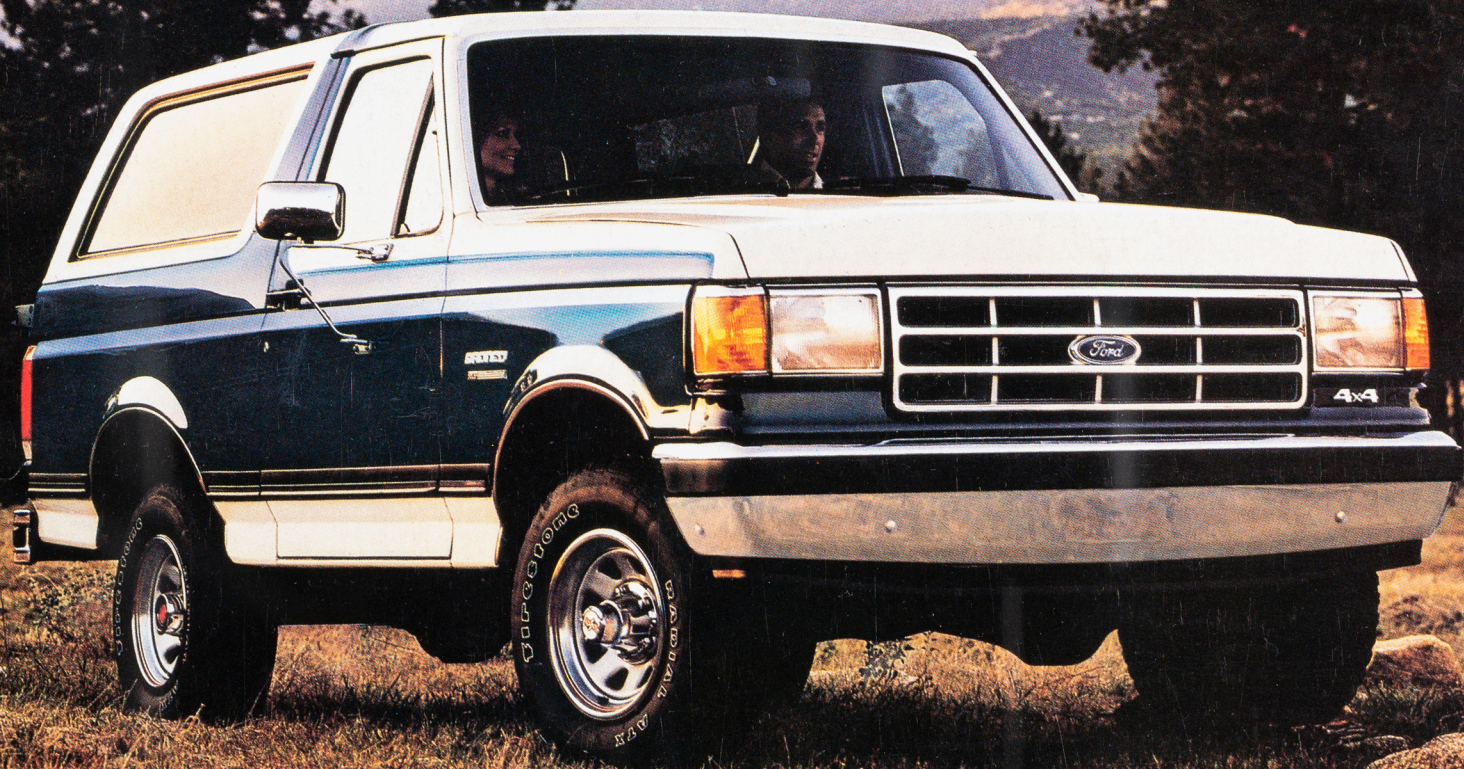


# 1987 Ford Bronco





---

## FORD BRONCO FOR 1987

---

---

### **BEST-BUILT AMERICAN TRUCKS SIX YEARS RUNNING**

---

"Quality is Job 1." In fact, for the past six consecutive years, Ford quality has led all other American automotive companies. This is based on an average of owner-reported problems in the first three months of service on '86 models, and in a six-month period on '81-'85 models designed and built in North America.

---

### **IT'S ALMOST A WAY OF LIFE**

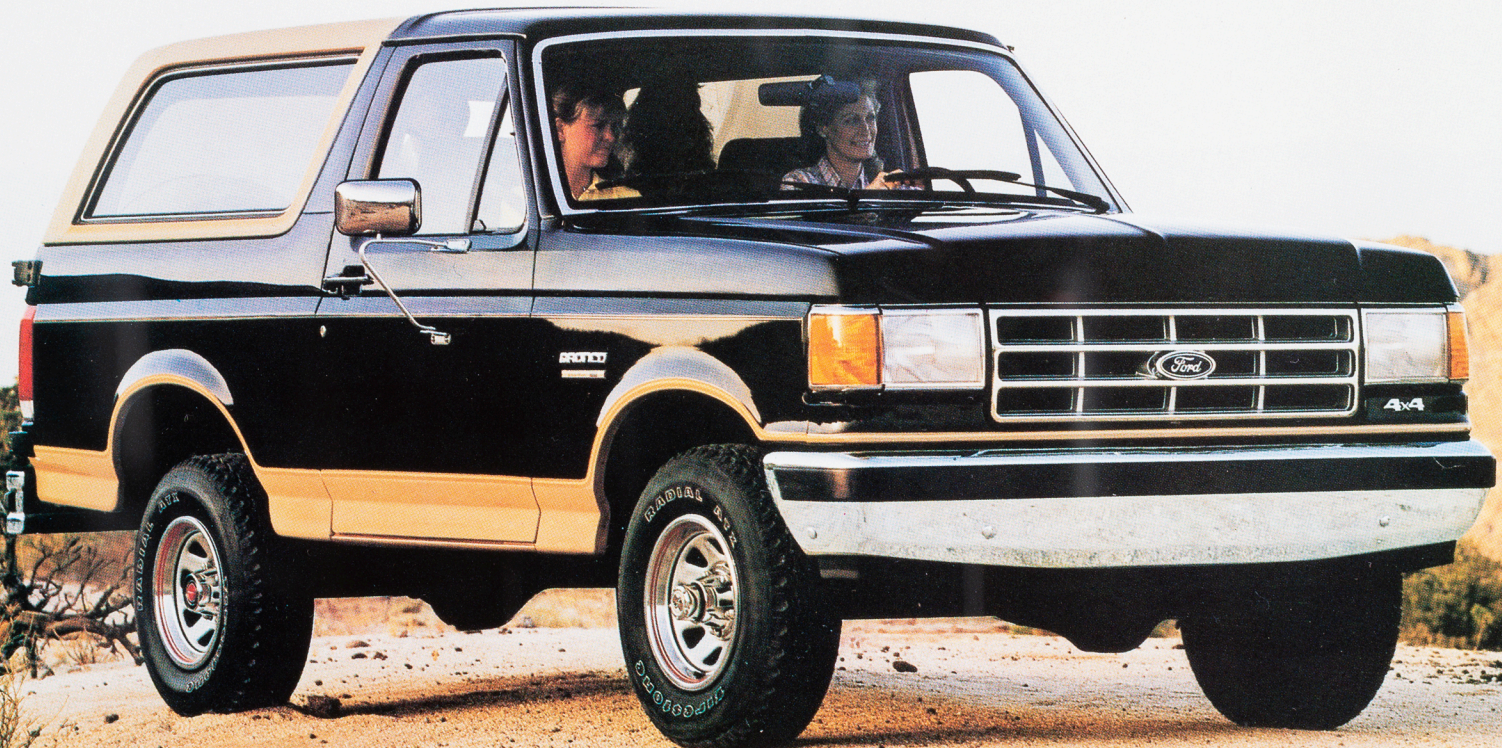
---

They say 4x4 owners are a different breed. They like the outdoors, camping, hunting and fishing. The vehicles they drive have to be able to take them there. Whether it's trailering the boat to the lake or taking the family out to dinner. And there's one thing a lot of those 4x4 owners have in common—a lot of them drive a Ford Bronco. It's almost a way of life.

The 1987 Ford Bronco features many new and exciting changes. The most apparent is the bold, new dynamic exterior design. There's a lot more, too. Like the addition of standard antilock rear brakes. And the 4.9 liter engine that now includes electronic, multiple port fuel injection. See what the '87 Bronco has to offer you.



**Eddie Bauer Bronco** features special interior and exterior trim that includes dual Captain's Chairs inside and a unique paint scheme outside.







**Bronco XLT** features a well-tailored interior with many interior convenience items and tasteful exterior highlights.



**Bronco Custom** is where it all starts with power steering, power brakes, rugged Twin-Traction Beam independent front suspension and an easy-to-care-for interior.

## CONTENTS

Ford Bronco Interior .....	4-5
Ford Eddie Bauer Bronco .....	6
Ford Bronco XLT .....	7
Ford Bronco Custom.....	8
Ford Bronco Specifications .....	9
Ford Bronco: The Technical Side.....	10-11
Preferred Equipment Packages .....	12-13
Options and Colors.....	14-15
Safety and Owner Benefits .....	16-17

Some equipment shown on these pages may be optional. See options list on page 15.

Below: Eddie Bauer Bronco in Raven Black over Light Chestnut.



# 1987 Ford Bronco









## OPERATING EASE, COMFORT AND VERSATILITY

The interior of a full-size utility vehicle like Bronco has to be a lot of things to a lot of people. Because of its full size and the places you and your family will take it, it has to be easy to operate. Because of the time you'll spend on the road and out 4-wheeling, it has to be comfortable. And because it's a utility vehicle, it has to have room for all the gear that goes along.

### RESTYLED INSTRUMENT PANEL

The new 1987 instrument panel has a curved shape that positions the speedometer centrally for an unobstructed view through the steering wheel. Gauges for fuel, oil pressure, temperature, and battery charge are also standard. The panel is backlit and the gauge pointers are illuminated for good night readability.

There's a new sensor light on the panel, too. It's for the standard electronically controlled rear antilock brake system. It contributes to smooth, straight stops by inhibiting rear wheel lock-up. Controls for the heater/defroster system are

located in the center pod. It has a high/low delivery system with four panel registers, side window demisters and a 3-speed blower.

The all electronic radio—AM in Custom Bronco (may be deleted for credit) and AM/FM stereo in XLT and Eddie Bauer—is mounted below the heater controls for easy access by the front passenger and driver. And all radios include a digital clock.

### COMFORTABLE SEATING

Bronco's standard front bucket seats feature full-foam padding over a flat steel spring base for firm yet comfortable support. For 3-passenger front seating, order the optional front bench seat.

In Eddie Bauer Bronco you get the luxury of dual front reclining Captain's Chairs (optional in XLT trim) with folding inboard armrests and map pockets with pouches on the seat backs.

### CARGO-CARRYING VERSATILITY

The rear seat of Bronco seats three comfortably and also has a flip/fold feature that allows you to increase the cargo volume from the standard 51.8 cubic feet to 81.6 cubic feet.

For easy operation, for comfort and for cargo-carrying versatility, you need look no further than Ford Bronco.



Left: Ford Bronco XLT interior shown in Regatta Blue.

Below: Bronco XLT instrument panel.

Top: Bronco cargo area.

Above: The power tailgate window, standard on all Broncos.

Some equipment shown on these pages may be optional. See options list on page 15.







## FORD EDDIE BAUER BRONCO

**TWO TOUGH OUTFITS—  
ONE TOUGH TRUCK**

Ford has long been known as a builder of tough trucks. And Eddie Bauer likewise is known for its rugged line of outdoor gear and clothing. So it seems only natural that they should get together to make one tough Bronco.

*Eddie Bauer*

Start out with the power of the electronically controlled, multiple port fuel-injected 5.0 liter V-8 and 4-speed manual transmission. Give

it a special Two-Tone paint that's not available on other Broncos. Wrap all-terrain radials with raised white letters around deluxe argent styled steel wheels. Put Privacy™ glass in the rear quarter windows. Then add the Ford Care Extended Service Plan (see your Ford Dealer for details), and you have a very distinctive Bronco.

The interior is equally distinctive with the luxury of all-cloth Captain's Chairs and the convenience of several added standard features. Like speed control/tilt steering wheel. Air conditioning. Electronic AM/FM stereo radio. And an Eddie Bauer garment bag and equipment bag are also included.

Check out an Eddie Bauer Bronco soon. It has ruggedness and style that's hard to match.



Top: Ford Eddie Bauer Bronco shown in Dark Canyon Red over Light Chestnut.

Above: Eddie Bauer Captain's Chairs shown in Chestnut.





## FORD BRONCO XLT

### A PRETTY TOUGH ACT TO FOLLOW

Bronco XLT is a good-lookin' truck, if you're in town or in the back forty. And it gives you all the equipment to make you feel at home in both places.

The trim new exterior has aero-style halogen headlights with impact-resistant plastic lenses and bright surround. There's a full chrome grille and chrome bumpers with rub strips. Bright rear quarter window moldings, bright wheelip and lower bodyside protection moldings accent the bodysides.

The XLT interior comforts you no matter where you are with plush color-keyed carpeting, cloth headliner and visors. The door panels have cloth inserts and handy map pockets. The seats feature poly-knit cloth for comfort and easy care. There's a lot more to XLT, and it's fully detailed in the Trim Chart on page 9.

Above: Ford Bronco XLT shown in Medium Silver Metallic over Dark Grey Metallic.

Right: Bronco XLT interior shown in Canyon Red.

Some equipment shown on these pages may be optional. See options list on page 15.







## FORD BRONCO CUSTOM

### A HARD-WORKING FAMILY 4-WHEELER

The Custom Bronco is a rugged and capable performer on or off the road. And it sets a high standard for all Broncos. Power steering and power front disc/rear drum brakes are standard. And tough, Twin-Traction Beam independent front suspension contributes to Bronco's smooth ride.

A big 32-gallon fuel tank coupled with the efficiency\* of the fuel-injected 4.9L engine gives

you long range cruising capability.

Inside, Bronco is as comfortable as it is easy to care for with full-foam padded front vinyl bucket seats and rear bench, tough vinyl color-keyed floor mat and color-keyed door panels. Other interior comfort and convenience items are: pivoting front vent windows; high-output type heater; tinted glass; power tailgate window; interval wipers; electronic AM radio with digital clock (may be deleted for credit), and more.

\*See Gas Mileage on page 11.

Above: Custom Bronco shown in Bright Canyon Red.

Right: Custom Bronco interior shown in Canyon Red.

Some equipment shown on these pages may be optional. See options list on page 15.





## TRIM CONTENT

Equipment	Custom	XLT	Eddie Bauer
<b>EXTERIOR</b>			
Chrome front bumper	•	•	•
Front bumper rub strip	•	•	•
Chrome rear step bumper with rub strip	•	•	•
Grille	Black	Chrome	Chrome
Aero-style halogen headlights	•	•	•
Wraparound front parking/turn signal lights	•	•	•
Bright surround (front lights)	•	•	•
Wraparound taillights	•	•	•
Bright low mount swingaway mirrors	•	•	•
Bright windshield molding	•	•	•
Tinted glass, complete	•	•	•
Removable rear fiberglass roof	•	•	•
Privacy™ glass (quarter windows)	■	■	•
Bright quarter window molding	•	•	•
Bright wheelip molding	•	•	•
Lower bodyside protection molding	•	•	•
Dual accent bodyside paint stripes	•	•	•
Unique Two-Tone paint	•	•	•
Swingdown tailgate with power window	•	•	•
Brushed aluminum tailgate applique	•	•	•
Sport wheel covers	•	•	•
Deluxe argent styled steel wheels	■	■	•
<b>INTERIOR</b>			
Front vinyl bucket seats	•	•	•
Front poly-knit cloth bucket seats	■	•	•
Front cloth Captain's Chairs	•	■	•
Rear flip/fold bench seat	•	•	•
Color-keyed door trim panels	•	•	•
Door trim panel cloth insert and map pocket	•	•	•
Color-keyed floor mat	•	•	•
Color-keyed carpeting	•	•	•
Color-keyed instrument panel with black appliques	•	•	•
Color-keyed instrument panel with woodtone appliques	•	•	•
Ammeter, temperature and oil pressure gauges	•	•	•
Side window demisters	•	•	•
Electronic AM radio with digital clock <sup>(1)</sup>	•	•	•
Electronic AM/FM stereo radio with digital clock	■	•	•
High-output style heater	•	•	•
Air conditioning	■	■	•
Interval wipers	•	•	•
Cigarette lighter	•	•	•
Inside hood release	•	•	•
Black steering wheel	•	•	•
Leather-wrapped steering wheel	•	•	•
Speed control/tilt steering wheel	■	•	•
Dual electric horns	•	•	•
Color-keyed safety belts with comfort regulator	•	•	•
Safety belt reminder chime	•	•	•
Floor console	■	•	•
Front color-keyed cloth headliner	•	•	•
Color-keyed vinyl sun visors	•	•	•
Color-keyed cloth sun visors with LH retention band and RH visor mirror	•	•	•
Black rear quarter trim panels	•	•	•
Color-keyed rear quarter trim panels with integral armrests and storage bin	•	•	•
Pivoting front vent windows	•	•	•
Dome light	•	•	•
Rear cargo light	•	•	•
Light Group <sup>(2)</sup>	■	■	•
Black spare tire cover	•	•	• <sup>(3)</sup>

(1) May be deleted for credit. (2) See Options Availability, page 15 for content. (3) Chestnut if outside spare tire carrier is ordered.

## FORD BRONCO SPECIFICATIONS AND DIMENSIONS

### SPECIFICATIONS

Equipment	Standard	Optional
Axle, front rating	3,550 pounds	—
Axle, rear rating	3,800 pounds	Limited slip. See your Ford Dealer for available ratios
Brakes, front disc/rear drum	Power	—
Clutch, hydraulically actuated, self-adjusting	10-inch diameter	—
Electrical Battery, maintenance-free Alternator	72-amp/hr. 60-amp	72-amp/hr. with 5.8L V-8 —
Front hubs, free-running	Manual locking	Touch-Drive, auto-locking hubs
Fuel tank	32 gallon	—
Shock absorbers, gas-pressurized	Heavy-duty front, rear	Handling Package, see pages 13 and/or 15 for contents
Springs, front	Computer selected coil	—
Springs, rear	Computer selected single stage leaf	—
Stabilizer bar	Front	Handling Package
Steering	Power	—
Transfer case (part time)	2-speed	—
Transmission	4-speed manual	M4OD, automatic, Automatic Overdrive
Tires, P-metric, steel-belted radials	P235/75R15XL BSW (Custom, XLT) P235/75R15XL RWL all-terrain (Eddie Bauer)	See Options Availability, page 15

### DIMENSIONS

A.	Angle of approach	34.6 degrees
B.	Angle of departure	17.7 degrees
C.	Ramp breakover angle	21.0 degrees
D.	Ground clearance at transfer case	9.1"
E.	Front tread	65.1"
F.	Rear tread	64.5"
G.	Wheelbase	104.7"
H.	Front overhang	30.5"
I.	Rear overhang	45.3"
J.	Overall length	180.5"
K.	Overall height	74.0"
L.	Overall width	79.1"
M.	Head room (front/rear)	41.1"/39.2"
N.	Shoulder room (front/rear)	65.4"/64.2"
O.	Leg room (front)	41.0"
	Turning diameter (curb-to-curb)	36.5-ft.







# FORD BRONCO: THE TECHNICAL SIDE

## FORD TRUCKS ARE AMERICA'S CHOICE

A commitment to engineering excellence is one of the reasons why Ford has been first in total truck sales for the past 17 years.\* And it is that commitment that helped reshape Ford Bronco for 1987.

### AIRFLOW MANAGEMENT

Bronco's bold new look is the result of Ford's advanced airflow management techniques. The front incorporates a smooth-contour front bumper, wraparound parking and turn signal lights and flush aero-style headlights to help smooth the flow of air.

The headlights, in addition to aiding airflow, are also easier to service than conventional sealed beam headlights. The halogen bulb can be removed and replaced using no tools. And no realignment of the lense is necessary.

### SOPHISTICATED NEW REAR ANTILOCK BRAKE SYSTEM

Advancements in computerized brake technology are at work in the new Ford Bronco to help you come to a straight stop when travelling in the 2-wheel drive mode.

Ford Bronco's new electronically controlled rear antilock brake system is designed to inhibit complete rear wheel lock-up under most operating conditions.

\* Based on total cumulative registrations from 1969 through May, 1986.

Left: Bronco XLT shown in Medium Silver Metallic over Raven Black.



Above: Bronco XLT with optional Trailer Towing Package

Anytime rear wheel lock-up is detected, the computer processes signals and directs the pressure control valve to modulate rear brake line hydraulic pressure. The result is more controlled rear braking performance. Each time the ignition is turned on, a warning light check and a complete computer self-check are made. The computer continuously checks for any possible electrical malfunction. Should the system ever fail to operate, the warning light on the instrument panel will alert the driver that the computer has automatically shut down the system and converted the rear brakes to conventional non-antilock operation.

### MULTIPLE PORT EFI

Bronco is the only full-size utility to offer a big 6-cylinder engine. And now, it's equipped with multiple port electronic fuel injection (EFI).

The addition of EFI results in increased horsepower and torque over 1986 plus other significant advantages. It provides individual injectors at each cylinder intake valve for precise fuel metering. Principal benefits are improved overall operation, smooth running and easy starting in temperature extremes.

### V-8 POWER WITH ELECTRONIC MULTI-PORT FUEL INJECTION

The advanced 5.0 liter V-8 engine (standard in Eddie Bauer Bronco, optional in Custom and XLT) combines the advantages of eight cylinders with the performance of electronically controlled, multiple port fuel injection. The 5.0L V-8 is the most powerful small V-8 in its class. This engine, along with the optional 4.10 rear axle and other required equipment, lets you tow trailers weighing up to 7,900 pounds.

### POWER TRANSMISSION—ANOTHER AREA OF BRONCO PERFORMANCE

The standard Bronco transmission is the 4-speed manual with a "creeper" first gear. The creeper is a low ratio gear that maximizes torque.

For efficient highway travelling, you can order the optional 4-speed manual transmission with a fourth gear overdrive.

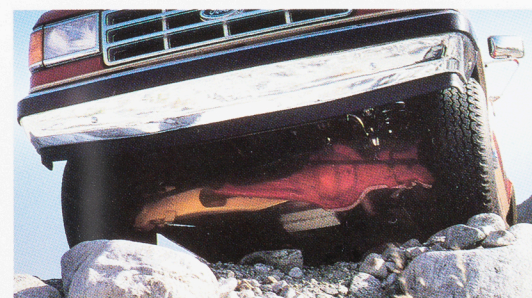
The Automatic Overdrive (AOD) transmission, available with the 5.0L V-8, in fourth gear, transmits torque by direct mechanical link-up. This eliminates power-wasting hydraulic slippage and cuts engine rpm by about one-third contributing to fuel economy.

### MANUAL LOCKING, FREE-RUNNING FRONT HUBS AND AN IMPROVED 2-SPEED TRANSFER CASE

Bronco's standard manual locking front hubs are the free-running type. That means that in the 2-wheel drive mode with the hubs unlocked, the front axles and driveshaft remain relatively motionless, reducing friction and wear. At the heart of Bronco's drive system is the proven chain-driven 2-speed transfer case. Interior linkage changes make this system quieter and easier shifting for 1987. Also, the addition of a positive displacement hydraulic oil pump allows towing Bronco at speeds up to 55-mph.

### NEW TOUCH-DRIVE ELECTRIC SHIFT TRANSFER CASE OPTION

The Touch-Drive option offers you the ultimate in convenience for 4-wheel driving fun. Now you can shift "on-the-fly" from 2-wheel drive high to 4-wheel drive high and back again at the touch of a button—and at any speed. Touch-Drive is available with the 5.0L EFI V-8 and AOD transmission. Automatic locking hubs are available with all other powertrains.



### TWIN-TRACTION BEAM INDEPENDENT FRONT SUSPENSION

This proven-tough performer combines heavy-duty off-road ruggedness with power to the front wheels and an independent design that lets each front wheel climb over bumps individually for a smooth ride. Other important features include lubed-for-life ball joints, adjustable camber and adjustable caster.

### GAS MILEAGE

1987 EPA mileage estimates were not available at the time this catalog was approved for printing. As soon as EPA figures are released, your Ford Dealer will be among the first to receive this information and will be happy to pass it along to you.







# 1987 Ford Bronco



## PERSONALIZED OPTIONS

In addition to the Preferred Equipment Packages, Bronco offers a wide selection of individual options which allow you to equip your vehicle even more to your particular needs.

Once you've chosen the series and the Preferred Equipment Package you desire, find your Preferred Equipment Package number in the chart on page 15, then choose from the options listed under it.

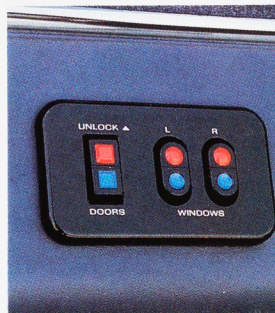
Options and their availability are subject to change. Your Ford Dealer can advise you of current status.

### ELECTRONIC AM/FM STEREO RADIO WITH CASSETTE TAPE PLAYER

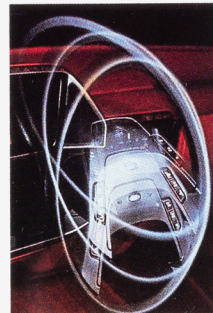
This electronic radio includes many features that are certain to please even the most ardent audiophile. Some of these features are: digital clock; preset memory for six AM stations and 12 FM stations; seek tuning up or down the scale; manual tuning; Dolby® noise reduction and front and rear fader controls.

### TOUCH-DRIVE ELECTRIC SHIFT TRANSFER CASE

Shifting "on-the-fly" from 2-wheel drive to 4-wheel drive is easy with this new for '87 Bronco option. The new Touch-Drive system will let you shift from 2-high to 4-high at any speed with one-touch, pushbutton ease. Touch-Drive also gives you more front seat floor space, especially with the front bench seat and automatic transmission options because both floor shift levers are eliminated. Touch-Drive is available with the 5.0L EFI V-8 and AOD transmission.



Power door locks and windows



Tilt steering wheel



Electronic AM/FM stereo seek radio with cassette tape player



Rear outside swingaway spare tire carrier



Deluxe argent styled steel wheels Sport wheel covers

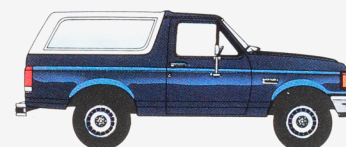
## TRAILER TOWING PACKAGE

For towing boats or campers this optional package provides you with all the basics. It includes a trailer wiring harness; heavy-duty battery; super engine cooling; auxiliary transmission oil cooler; heavy-duty flasher; and the Handling Package that adds a rear stabilizer bar and quad front and heavy-duty rear shock absorbers. Consult your Ford Dealer for trailer towing limits and required equipment.

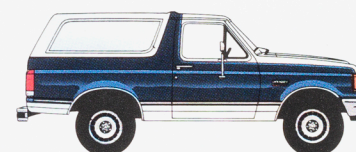
## BRONCO TWO-TONES

■ Body Color

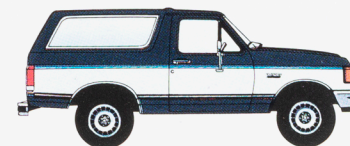
□ Accent Color



**Two-Tone effect:** Exterior color accented by rear fiberglass roof available in four different colors.



**Victoria Two-Tone:** Includes accent color on hood, upper fender, around door window and on lower bodyside below the lower bodyside protection molding.



**Deluxe Two-Tone:** Includes accent color on center bodyside area and on tailgate between tape stripe below the mid-bodyside depression and lower bodyside protection molding.



■ = Optional    ● = Included in equipment packages (see pages 9 and 13 for additional standard features)							
BRONCO 4x4	Custom		XLT		Eddie Bauer		
	680A*	681A	682A	683A	684A	685A	686A
4.9L EFI with 4-speed manual OD	■	■	■	■	■		
4.9L EFI with automatic <sup>(1)</sup>	■	■	■	■	■		
5.0L EFI with 4-speed manual <sup>(1)</sup>	■	■	■	■	■		
5.0L EFI with AOD	■	■	■	■	■	■	■
5.8L HO with automatic <sup>(1)</sup>	■	■	■	■	■	■	■
P235/75R15XL BSW all-terrain	■	■	■	■	■		
P235/75R15XL RWL all-terrain	■	■	■	■	■		
31 x 10.5R 15C RWL all-terrain			■	■	■	■	■
Heavy-duty maintenance-free battery	■	■	■	■	■	■	■
Super engine cooling	■	■	■	■	■	■	■
Handling Package <sup>(2)</sup>	■	■	■	■	■	■	■
Engine block heater	■	■	■	■	■	■	■
Transfer case skid plate	■	■	■	■	■	■	■
Heavy-duty Front Suspension/ Snow Plow Package <sup>(3)</sup>	■	■	■	■	■	■	■
Trailer Towing Package <sup>(4)</sup>	■	■	■	■	■	■	■
Touch-Drive electric shift	■	■	■	■	■	■	■
Privacy™ glass	■	■	■	■	■	■	■
Deluxe Two-Tone paint	■	■	■	■	■	■	■
Victoria Two-Tone paint		■	■	■	■	■	■
Deluxe argent styled steel wheels	■	■	■	■	■	■	■
Outside swingaway spare tire carrier	■	■	■	■	■	■	■
Cloth and vinyl bucket seats	■	■	■	■	■	■	■
Cloth and vinyl bench	■	■	■	■	■	■	■
Cloth Captain's Chairs			■	■	■	■	■
Air conditioning	■	■	■	■	■	■	■
Floor console	■	■	■	■	■	■	■
Rear window defroster	■	■	■	■	■	■	■
Light Group <sup>(5)</sup>	■	■	■	■	■	■	■
Power door locks and windows			■	■	■	■	■
Speed control/tilt steering wheel	■	■	■	■	■	■	■
Tachometer		■	■	■	■	■	■
Electronic AM/FM stereo seek radio with digital clock	■	■	■	■	■	■	■
Electronic AM/FM stereo seek radio with cassette tape player and digital clock	■	■	■	■	■	■	■
Radio credit option	■	■					

\*680A is the basic Custom Bronco trim level. See the model pages 8-9 for content. (1) NA in California. (2) Includes rear stabilizer bar and quad front and heavy-duty rear shock absorbers. (3) Includes heavy-duty front axle (3800#); 3.55 rear axle ratio; heavy-duty front springs (3800#); heavy-duty rear shock absorbers; heavy-duty alternator; heavy-duty battery; auxiliary transmission oil cooler (with automatic transmission only). (4) Includes trailer wiring harness; heavy-duty battery; super engine cooling; auxiliary transmission oil cooler; heavy-duty flasher; Handling Package. (5) Includes glove box light; headlights "on" reminder buzzer; underhood light; dual beam dome/map light (standard dome light with optional bench seat); courtesy lights under instrument panel.

## BRONCO ROOF COLORS



• Black



• Light Chestnut



• Dark Shadow Blue



• White

## COLOR SELECTIONS

Exterior Paint Colors	Interior Trim Colors		
	Regatta Blue	Canyon Red	Chestnut
Raven Black*		X	X
Dark Grey Metallic		X	X
Medium Silver Metallic	X	X	
Bright Canyon Red		X	X
Light Regatta Blue	X		
Dark Canyon Red*		X	X
Dark Shadow Blue Metallic*	X		
Colonial White	X	X	X
Desert Tan Metallic*			X
Light Chestnut*		X	X
Alpine Green Metallic*			X

Some of these paint colors are shown throughout this catalog. On the printed page, of course, colors are at best only representative of the original. Your Ford Dealer can show you actual samples of paint colors as well as interior trim samples.

\* Eddie Bauer body colors with Light Chestnut applied below the rocker area and Chestnut interior trim. Alpine Green Metallic available on Eddie Bauer Bronco only.



Raven Black



Dark Canyon Red



Dark Grey Metallic



Dark Shadow Blue Metallic



Medium Silver Metallic



Colonial White



Bright Canyon Red



Desert Tan Metallic



Light Regatta Blue



Light Chestnut



Alpine Green Metallic  
(Eddie Bauer only)



## SAFETY AND OWNER BENEFITS

### THE FORD QUALITY COMMITMENT

The Ford Quality Commitment is built on a basic and simple concept: Integrity. Integrity in the way we build our products, integrity in our dealerships' service and integrity in the treatment of our customers.

### TOGETHER WE CAN SAVE LIVES



Ford Motor Company strongly encourages all passengers to use their safety belts.

In Ford trucks, outboard front seat lap and shoulder belts have automatic retractors. Outboard rear seat positions also have lap belts with retractors.

Ford urges the use of child and infant restraints, as required by law in all states. Ford's easy-to-install Tot-Guard (for children 20 to 50 pounds) and Infant Carrier (for children up to 20 pounds) are available at all Ford Dealers. If a child restraint requires a top-tether, Ford trucks provide special anchorages.

### FORD LIFEGUARD DESIGN SAFETY FEATURES

#### Vehicle Operation

- Split service hydraulic brake system with warning light
- Corrosion-resistant brake lines
- Turn indicator with lane-changing signal feature
- Hazard warning flasher
- Backup lights
- Side marker lights
- Parking lights coupled with headlamps
- Two-speed windshield wipers
- Windshield washers
- Outside rearview mirrors
- Glare-reduced instrument panel, windshield wiper arms and windshield pillars
- Uniform transmission shift quadrant with safety starting switch (on all vehicles equipped with automatic transmission)
- Continuously variable control illumination intensity (instrument cluster lighting)
- Safety hood latch system
- Responsive windshield defroster system

- Tamper-resistant (non-reversing) odometer
- Speedometer with highlighted 55 mph

#### Occupant Protection

- Safety-designed front end structure
- Safety-designed roof structure
- Two-position door safety latches
- Integral lap and shoulder belts with automatic retractors for outboard occupants
- Positive safety belt fastening reminder light and buzzer or chime for the driver's seat
- Lap belt for center front passenger (with optional front bench seat)
- Energy-absorbing steering column
- Energy-absorbing armrests and safety-designed door handles
- Energy-absorbing instrument panel with padding for center and front (where three-passenger front seat is provided) passengers
- Energy-absorbing sun visors
- Safety glove box latch
- Inside yieldaway rearview mirror
- Impact-absorbing laminated safety glass windshield
- Flame-resistant interior materials
- Safety-designed coat hook
- Safety-designed radio control knobs and push buttons



#### Anti-Theft

- Locking steering column with key warning buzzer (with "Park" interlock or push button for key release)
- Visible vehicle identification number



Participating Ford Dealers are now offering the Lifetime Service Guarantee, which guarantees their work on your Ford vehicle for as long as you own it. This means that the covered repair is paid for once — and never again. If it ever has to be fixed again, the repairing dealer will fix it free. Free parts. Free labor. Even if the vehicle is kept a lifetime. It doesn't matter where it was purchased, or whether it's new or used; the work is still covered by the repairing dealer.

This limited warranty covers vehicles in normal use. Items not covered include routine maintenance parts, belts, hoses, sheet metal, and upholstery. Ask to see this guarantee when you visit your participating Ford Dealer.



The optional Ford Extended Service Plan covers major components on new Ford cars and trucks for longer than the vehicle's basic warranty. The cost for this added protection is so moderate that it could pay for itself the first time you need it. Your Ford Dealer has full details.



Ford Motor Credit Company is interested in helping to fill the transportation needs of every qualified buyer of a Ford product. A participating dealer can arrange financing terms or a Red Carpet Lease® tailored to your circumstance. Ford Credit has offices conveniently located throughout the United States.

## Motorcraft

### QUALITY REPLACEMENT PARTS FROM FORD

Genuine Ford and Motorcraft original equipment replacement parts meet the same high standards as those installed in production. They are your best assurance of quality and long-term satisfaction.

### SCHEDULED MAINTENANCE

Here are some examples of scheduled maintenance intervals for the 1987 Bronco. For complete recommendations, refer to the Maintenance Schedule Booklet.

Engine oil change .....	each 10,000 miles or 6 months
Spark plug change .....	each 30,000 miles
Air filter replacement .....	each 30,000 miles
Engine coolant replacement .....	each 30,000 miles or 3 years

### GREATER CORROSION PROTECTION

Ford takes tougher measures than ever to protect its trucks from the damaging effects of corrosion. Ford trucks for 1987 offer additional improved corrosion protection including two-sided galvanized steel as well as galvanized steel for some body parts which were previously untreated.

These improvements, in addition to special treatments such as aluminized wax, applications of urethane spray, and the use of non-metallic parts which cannot corrode, are further evidence of Ford's continuing commitment to building high-quality trucks.





QUALITY REPLACEMENT PARTS  
FROM FORD

Genuine Ford and Motorcraft original equipment replacement parts meet the same high standards as those installed in production. They are your best assurance of quality and long-term satisfaction.

### **SCHEDULED MAINTENANCE**

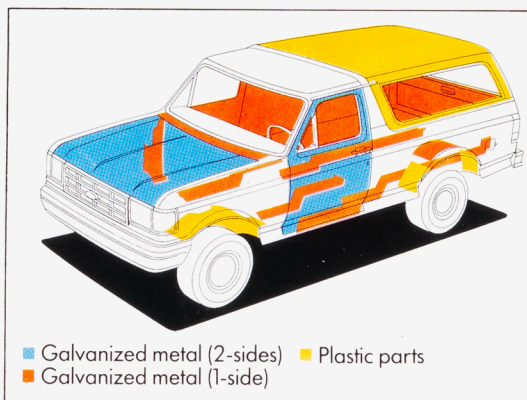
Here are some examples of scheduled maintenance intervals for the 1987 Bronco. For complete recommendations, refer to the Maintenance Schedule Booklet.

Engine oil change	.....	each 10,000 miles or 6 months
Spark plug change	.....	each 30,000 miles
Air filter replacement	.....	each 30,000 miles
Engine coolant replacement	.....	each 30,000 miles or 3 years

### **GREATER CORROSION PROTECTION**

Ford takes tougher measures than ever to protect its trucks from the damaging effects of corrosion. Ford trucks for 1987 offer additional improved corrosion protection including two-sided galvanized steel as well as galvanized steel for some body parts which were previously untreated.

These improvements, in addition to special treatments such as aluminized wax, applications of urethane spray, and the use of non-metallic parts which cannot corrode, are further evidence of Ford's continuing commitment to building high-quality trucks.



### **FORD-PAID REPAIR PROGRAMS AFTER THE WARRANTY PERIOD**

Sometimes Ford offers adjustment programs to pay all or part of the cost of certain repairs. These programs are intended to assist owners and are in addition to the warranty or to required recalls. Ask Ford or your dealer about such programs relating to your Ford or Lincoln-Mercury vehicle.

To get copies of any adjustment program for your vehicle or the vehicle of interest to you: Call Ford toll-free at 1-800-241-3673. Alaska/Hawaii call 1-800-241-3711 and in Georgia call 1-800-282-0959.

Or write Ford at:  
Ford Customer Information System  
Post Office Box 95427  
Atlanta, Georgia 30347

We'll need your name and address; year, make and model vehicle, as well as engine size; and whether you have a manual or automatic transmission.

### **TECHNICAL SERVICE BULLETINS**

All vehicles need repairs during their lifetime. Sometimes Ford issues technical service bulletins (TSBs) and easy-to-read explanations describing unusual engine or transmission conditions which may lead to costly repairs, the recommended repairs, and new repair procedures. Often a repair now can prevent a more serious repair later. Ask Ford or your dealer for any such TSBs and explanations relating to your Ford or Lincoln-Mercury vehicle.

To get copies of these technical service bulletins and explanations for your vehicle or the vehicle of interest to you: Call Ford toll-free at 1-800-241-3673. Alaska/Hawaii call 1-800-241-3711 and in Georgia call 1-800-282-0959.

Or write Ford at:  
Ford Customer Information System  
Post Office Box 95427  
Atlanta, Georgia 30347

We'll need your name and address; year, make and model vehicle, as well as engine size; and whether you have a manual or automatic transmission.

### **OPTIONS AVAILABILITY**

Options shown or described in this catalog are available at extra cost and may be offered only in combination with other options and subject to additional ordering requirements or limitations.

### **PRODUCT CHANGES**

Ford Division reserves the right to change product specifications at any time without incurring obligations. It is important to note also that some of the items shown on vehicles in this publication are available through retail organizations and establishments not connected with Ford Motor Company. Availability, price, quality and durability of these items rest solely with the respective manufacturers and their sales organizations, and Ford assumes no responsibility for their use.

### **"ASK YOUR FORD DEALER"**

Following publication of this catalog, certain changes in standard equipment, options, prices and the like, or product delays, may have occurred which would not be included in these pages. Your Ford Dealer is your best source for up-to-date information.

### **BUY OR LEASE A NEW FORD BRONCO**



**BUY OR LEASE  
A NEW FORD BRONCO**



FDT-8712 Litho in U.S.A. 8/86

