

# 1987 Ford Bronco II

## Sales Brochure

BroncoIICorral.com



### FORD BRONCO II XL

**ENGINEERED AND EQUIPPED  
FOR THE FUN OF DRIVING**

Bronco II XL is powered by a 2.9 liter V-6 engine that's electronically fuel-injected and computer-controlled. The independent front suspension is engineered for smooth ride comfort and handling control. The steel-belted radial tires have all-season tread design. Steering is power-assisted. And the power brakes feature the sophisticated electronically controlled rear antilock brake system.

On top of all of this performance you have an impressive list of other great standard features.

Knitted vinyl reclining front bucket seats with tip-and-slide passenger seat for easy access to the rear passenger area. Versatile 50/50 split rear seats which give you the option of folding down one seat if you need space for longer cargo while still having room for a third passenger.

Bronco II XL also includes an electronic AM radio with digital clock. Instrument cluster gauges. A convenient trip odometer. Full-length color-keyed floor carpeting and cloth headliner. Plus halogen headlamps, bright bumpers with rub strips, sport wheel covers, and much more.

Bronco II XL for 1987. When it comes down to fun-to-drive performance, on or off the road, it has everything it takes to be a winner.

Above: Bronco II XL in Dark Canyon Red.

Right: Bronco II XL interior in Canyon Red.



# 1987 Ford Bronco II





## FORD BRONCO II FOR 1987

**BEST-BUILT AMERICAN TRUCKS  
SIX YEARS RUNNING**

"Quality is Job 1." In fact, for the past six consecutive years, Ford quality has led all other American automotive companies. This is based on an average of owner-reported problems in the first three months of service on '86 models, and in a six-month period on '81-'85 models designed and built in North America.

### **BUILT FUN-TOUGH**

Set your destination and head for it in a 1987 Bronco II from Ford. No matter where you go, Bronco II has all the style and performance to make your trip enjoyable in a fun-tough compact utility vehicle.

Bronco II is powered by a 140-hp 2.9 liter multiple-port electronically fuel-injected V-6\* and equipped with the new electronically controlled rear antilock brake system explained on page 8. So Bronco II has the muscle to get you going plus high-tech capability to help bring you to a straight stop.

Bronco II for 1987 offers more choices than ever before. There's the new Bronco II 4x2 for those who want a vehicle that's both fun to drive and practical for travel around town. It's especially ideal for families, providing lots of room for four passengers and plenty of space for cargo. And there's the 4x4 model engineered to take on the tough demands of rugged off-road terrain. Bronco II 4x4 offers a choice of manual locking hubs or Touch-Drive electric shift option.

\*Based on SAE Standard J-1349.



**Eddie Bauer Bronco II** is top of the line. Among its many features are air conditioning, special trim, plus the "Ford Care" extended maintenance and limited warranty program.







**Bronco II XLT** is equipped for outstanding value with the kinds of features that most drivers prefer. This deluxe Bronco II series offers an impressive list of comforts and conveniences.



**Bronco II XL** is handsomely equipped and engineered with the fun-to-drive qualities you'd expect in a compact utility. Like all Bronco II's, XL is available in 4x2 or 4x4 model.

#### CONTENTS

Ford Eddie Bauer Bronco II .....	4-5
Ford Bronco II XLT .....	6
Ford Bronco II XL .....	7
Ford Bronco II: The Technical Side .....	8-9
Preferred Equipment Packages .....	10-11
Options and Colors .....	12-13
Safety and Owner Benefits .....	14-15

Below: Eddie Bauer Bronco II in Dark Walnut Clearcoat Metallic/Light Chestnut.

Some equipment shown on these pages may be optional. See options list on page 13.



## 1987 Ford Bronco II









## FORD EDDIE BAUER BRONCO II

**FUN, FREE-WHEELING  
BRONCO II AT ITS BEST**

Driving enjoyment at its best in a compact utility vehicle — you can expect nothing less in an Eddie Bauer Bronco II 4x2 or 4x4 from Ford, named after the world-famous designer of outdoor gear.

Eddie Bauer is unique in the Bronco II lineup, from its Two-Tone paint treatment with accent stripes (five combinations available) to its dual reclining front Captain's Chairs with power

lumbar supports and special cloth with vinyl trim.

*Eddie Bauer*

Eddie Bauer Bronco II includes a lot of other great features, too. Air conditioning, standard at no extra cost. Larger P205 all-season steel-belted radial tires on sporty cast aluminum wheels. Privacy™ glass quarter windows. The convenience of speed control and adjustable tilt steering wheel. Plus all the deluxe features in the Bronco II XLT series. You also get Eddie Bauer garment and gear bags, trimmed in tan cloth and leather, shipped directly to you from Eddie Bauer.

What's more, with Eddie Bauer Bronco II you get the "Ford Care" extended maintenance and limited warranty program, with coverage for up to 24 months or 24,000 miles. Ask your Ford Dealer to give you the full details of this limited warranty and to show you up close everything that puts the Eddie Bauer Bronco II in a class by itself.

Left: Eddie Bauer Bronco II interior in Chestnut.

Above: Eddie Bauer Bronco II in Deep Shadow Blue Clearcoat Metallic/Light Chestnut.

Some equipment shown on these pages may be optional. See options list on page 13.





## FORD BRONCO II XLT

### **BEAUTIFULLY EQUIPPED FOR VALUE**

The XLT badge on a Bronco II is more than just a series designation. It represents a Ford idea: to offer you a vehicle that's exceptionally well-equipped from the start.

XLT's interior is as handsome as it is comfortable. The reclining front bucket seats are upholstered in cloth and vinyl. The door trim panels are trimmed in cloth, include carpeting on the lower sections as well as map pockets to carry an assortment of travel items.

An electronic AM/FM stereo radio is standard, as well as pivoting front vent windows, variable-control interval windshield wipers, leather-wrapped steering wheel, instrument panel woodtone appliques, tachometer, rear quarter trim panel storage compartments, passenger-side visor mirror, courtesy lights (ashtray, glove box, engine compartment), headlamps-on alert chime, plus added sound insulation. Outside, XLT features a chrome grille, upper bodyside and liftgate tape stripes, deluxe wheel trim, and bright low-mount swingaway mirrors.

Bronco II XLT for 1987. It's equipped to offer outstanding value in a compact utility vehicle.

Above: Bronco II XLT in Bright Regatta Blue Clearcoat Metallic/Colonial White Deluxe Two-Tone.

Right: XLT interior with available 60/40 split bench seat in Regatta Blue.



Some equipment shown on these pages may be optional. See options list on page 13.





## **FORD BRONCO II XL**

**ENGINEERED AND EQUIPPED  
FOR THE FUN OF DRIVING**

Bronco II XL is powered by a 2.9 liter V-6 engine that's electronically fuel-injected and computer-controlled. The independent front suspension is engineered for smooth ride comfort and handling control. The steel-belted radial tires have all-season tread design. Steering is power-assisted. And the power brakes feature the sophisticated electronically controlled rear antilock brake system. On top of all of this performance you have an impressive list of other great standard features.

Knitted vinyl reclining front bucket seats with tip-and-slide passenger seat for easy access to the rear passenger area. Versatile 50/50 split rear seats which give you the option of folding down one seat if you need space for longer cargo while still having room for a third passenger. Bronco II XL also includes an electronic AM radio with digital clock. Instrument cluster gauges. A convenient trip odometer. Full-length color-keyed floor carpeting and cloth headliner. Plus halogen headlamps, bright bumpers with rub strips, sport wheel covers, and much more. Bronco II XL for 1987. When it comes down to fun-to-drive performance, on or off the road, it has everything it takes to be a winner.

Above: Bronco II XL in Dark Canyon Red.  
Right: Bronco II XL interior in Canyon Red.





## FORD BRONCO II: THE TECHNICAL SIDE

### A PRODUCT OF ENGINEERING EXCELLENCE AND HIGH QUALITY

Bronco II is the product of a tradition of engineering vehicles with emphasis placed on great overall performance. This commitment to engineering excellence is one reason why Ford has been first in total truck sales for the past 17 years.\*

Ford engineers have gone to great lengths, applying their expertise and employing the latest advancements in computer-assist design technology, to make Bronco II a compact utility vehicle of excellent precision and balance. But even more important, these high standards of engineering are matched to equally high standards of quality — from the drawing boards all the way through to final assembly.

### SOPHISTICATED NEW REAR ANTILOCK BRAKE SYSTEM

Advancements in computerized brake technology are at work to help you come to a straight stop when you're driving a 1987 Bronco II 4x2 or a Bronco II 4x4 in the 2-wheel-drive mode.

Bronco II's new electronically controlled rear antilock brake system is designed to inhibit complete rear wheel lock-up under most operating conditions. Anytime rear wheel lock-up is detected, the computer processes signals and directs the pressure control valve to selectively modulate rear brake line hydraulic

pressure. The result is more controlled rear braking performance.

Each time the ignition is turned on, a warning light check and a complete computer self-check are made. The computer continuously checks for any possible electrical malfunction. Should the system ever fail to operate, the warning light on the instrument panel will alert the driver that the computer has automatically shut down the system and converted the rear brakes to conventional non-antilock operation.

### STANDARD 2.9L V-6, ELECTRONICALLY FUEL-INJECTED

Whether you drive a Bronco II 4x2 around town or travel off-road in a rugged Bronco II 4-wheeler, you have 140 horses under the hood.\*\* At the heart of the 2.9 liter V-6 is a multi-port electronic fuel injection (EFI) system governed by the Ford-designed EEC-IV engine control computer.

As each cylinder receives a high-pressure charge of fuel from its own injector, the EEC-IV computer collects information related to conditions such as throttle position, intake air and engine coolant temperatures, and barometric pressure. This information is then processed by the computer to control the fuel-air mixture and spark timing to optimize power, response and efficiency.

For recreational boat or trailer towing, Bronco II V-6 performance allows for a gross combination weight rating (GCWR) of 8,500 pounds and a maximum trailer weight rating of 5,200 pounds in the 4x2 model, 5,000 pounds in the 4x4.† A properly equipped Bronco II for

this kind of towing is powered by the 2.9L EFI V-6 with Automatic Overdrive transmission (standard in the 4x2 model), 4.10 rear axle, and the Super Engine Cooling Package.

### AUTOMATIC OVERDRIVE TRANSMISSION

This is a Ford-engineered 4-speed automatic overdrive (A4LD) transmission with electronically controlled converter clutch, which automatically engages during steady-speed operation in fourth gear and the upper range of third gear. This eliminates power-wasting torque converter slippage for improved fuel economy, especially during highway travel. A4LD is standard in the Bronco II 4x2 model, and optional in the 4x4.

### MANUAL LOCKING 4x4 HUBS

Bronco II's 4x4 standard free-running front hubs are the manual locking type. When the wheel hubs are locked, you can shift "on the fly" from 2-wheel high to 4-wheel high and back to suit driving conditions.

### TOUCH-DRIVE ELECTRIC SHIFT TRANSFER CASE OPTION

Touch-Drive offers the ultimate in convenience for 4-wheel driving enjoyment. You can shift "on the fly" from 2-wheel high to 4-wheel high and back at the touch of a button at any speed. The push-button controls are conveniently located in an overhead console.

Touch-Drive has other great features as well. Two special electrical interlocks prevent possible powertrain damage that might otherwise be



Four-wheeling enjoyment is yours in a V6-powered, fun-tough Bronco II 4x4.



Bronco II is a great vehicle for recreational boat or trailer towing.





Optional Touch-Drive electric shift 4x4 transfer case

caused by a mis-shift between 4-high and 4-low. Shifting into or out of 4-low can only be done when the vehicle is either stopped or moving below 3 mph with the manual transmission clutch disengaged or the automatic transmission in neutral position. Also, the automatic locking hubs engage instantly because Touch-Drive utilizes an innovative magnetic clutch that spins up the front drive system from zero to driving speed in milliseconds.

#### ENGINEERED FOR RIDE QUALITY AND HANDLING CONTROL

Bronco II features the Ford-famous Twin-I-Beam independent front suspension in the 4x2 model and the Twin-Traction Beam system in the 4x4. Each front wheel, with its own axle and hefty coil spring, steps over bumps independently to cushion the ride and provide excellent handling. All Bronco II models are also equipped with gas-pressurized shock absorbers designed to help maintain proper hydraulic fluid pressure, even over a rapid succession of jarring bumps. So the ride is smooth under normal circumstances yet firm enough over rough road conditions. Also standard are front and rear stabilizer bars for handling control, plus all-season steel-belted radial tires for traction.

#### GAS MILEAGE

1987 EPA mileage estimates were not available at the time this catalog was approved for printing. As soon as EPA figures are released, your Ford Dealer will be among the first to receive this information and will be happy to pass it along to you.

\*Based on cumulative R.L. Polk & Company registrations from 1969 through May, 1986.

\*\*Based on SAE Standard J-1349.

†Reduced by passenger and cargo weight in the towing vehicle.

Some equipment shown on these pages may be optional. See options list on page 13.

#### SPECIFICATIONS

Equipment		4x2	4x4
Powertrains	Std.	2.9L EFI V-6/4-Speed Automatic OD	2.9L EFI V-6/5-Speed Manual OD
	Opt.		2.9L EFI V-6/4-Speed Automatic OD
Fuel Tank (gals.)	Std.	23	23
Electrical:			
Battery (amp-hr)	Std.	71 maintenance-free	71 maintenance-free
Alternator (amp)	Std.	40	40
Steering	Std.	Power	Power
Brakes	Std.	Power	Power
Frame	Std.	Ladder-type	Ladder-type
Axles, Front	Std.	2,200 lb. Twin-I-Beam	2,750 lb. Twin-Traction Beam
Rear	Std.	2,640 lb.	2,640 lb.
	Opt.	Limited Slip	Limited Slip
Transfer Case	Std.	—	2-speed manual
	Opt.	—	"Touch-Drive" electric
Shock Absorbers	Std.	Gas-pressurized	Gas-pressurized
Stabilizer Bars	Std.	Front and rear	Front and rear
Springs:			
Front	Std.	1,750 lb. (coil)	1,970 lb. (coil)
	Opt.	Computer-selected	Computer-selected
Rear	Std.	2,168 lb. (leaf)	2,172 lb. (leaf)
	Opt.	Computer-selected	Computer-selected
Curb-to-curb turning diameter	Std.	32.5 ft.	32.5 ft.
Tires	Std.	4 P195/75R15SL BSW <sup>†</sup> all-season steel-belted (limited service spare)	4 P195/75R15SL BSW <sup>†</sup> all-season steel-belted (limited service spare)
	Opt.	Optional size and tread design steel-belted radials are available. Use adequate tires for type of service. Consult your Ford Dealer. Full-size conventional spare tire is available with optional swingaway spare tire carrier.	

OD - Overdrive. LS - Limited Slip. † P205/75R15SL RWT tires standard on Eddie Bauer series.

#### DIMENSIONS

	4x2 (front/rear)	4x4 (front/rear)
<b>EXTERIOR</b>		
Wheelbase	94.0"	94.0"
Overall length	158.2"	158.2"
Overhang	28.2"/36.0"	28.2"/36.0"
Tread	56.9"/56.9"	56.9"/56.9"
Overall width	68.0"	68.0"
Overall height	68.2"	68.4"
Load floor/liftover height	29.5"	29.5"
Liftgate opening height	34.3"	34.3"
Axle clearance	—/6.5"	6.3"/6.5"
Ground clearance at transfer case (unloaded)	—	9.3"
Angle of approach	—	29.3"
Angle of departure (loaded)	—	24.7"
Ramp breakover angle (loaded)	—	24.1"
<b>INTERIOR</b>		
Head room	39.5"/38.3"	39.5"/38.3"
Leg room	42.2"/35.2"	42.2"/35.2"
Hip room	54.8"/44.1"	54.8"/44.1"
Shoulder room	55.5"/56.7"	55.5"/56.7"
Width between wheelhouses	41.9"	41.9"
Cargo length — rear seat up	21.2"	21.2"
— rear seat down	52.5"	52.5"
Cargo volume — rear seat up	25.6	25.6
(cu. ft.) — rear seat down	64.9	64.9







## PREFERRED EQUIPMENT PACKAGES

### AN EASY WAY TO BUY

The **Bronco II XLT** pictured at left illustrates the high level of equipment in this series. Included is Preferred Equipment Package 930A with features, such as air conditioning at no extra cost, which make this XLT a truly outstanding value.

#### BRONCO II XLT (WITH PREFERRED EQUIPMENT PACKAGE 930A):

- 2.9 liter EFI V-6 engine
- 4-speed Automatic Overdrive transmission (4x2); 5-speed manual overdrive transmission (4x4)
- Air conditioning
- Light Group
- Interval windshield wipers
- Bright low-mount swingaway mirrors
- Tachometer
- Deluxe Two-Tone paint (may be deleted)
- Privacy™ rear quarter windows
- Speed control/tilt steering wheel
- Electronic AM/FM stereo radio
- Cloth and vinyl reclining front bucket seats
- Power windows and door locks
- Rear window defroster/wiper-washer
- Deluxe wheel trim
- P195/75R15SL BSW all-season tires
- Other XLT Trim features (see page 6)

#### Plus the following standard features:

- Halogen headlights
- Tinted glass
- Deep-tinted liftgate glass
- Color-keyed passenger and cargo area carpeting
- Color-keyed carpeted rear seat backs
- Color-keyed cloth headliner
- Ammeter, engine temperature and oil pressure gauges
- Trip odometer

Left: Bronco II XLT in Shadow Grey Clearcoat Metallic/Silver Clearcoat Metallic Deluxe Two-Tone.

Some equipment shown may be optional. See options list on page 13.

**Preferred Equipment Packages** are groups of popular features. By combining them, we simplify the ordering procedure. All you have to do is: (1) Decide on the trim level (XL, XLT or Eddie Bauer); (2) Select the Preferred Equipment Package from the chart below that includes the features you want.

For instance, if you decide on a Bronco II XLT, you can choose to have it equipped with one of three Preferred Equipment Packages numbered 922A, 930A and 931A. Package 922A is the standard Bronco II XLT, which by itself is a well-equipped vehicle (see page 6). Package 930A adds a group of options which includes: deluxe Two-Tone paint (may be deleted); Privacy™

glass quarter windows; speed control/tilt steering wheel; power windows and door locks; and rear window defroster/wiper-washer. Compared with Package 930A, Package 931A includes the flip-open rear window (in place of the rear window defroster/wiper-washer) and larger P205/75R15SL RWL all-season steel-belted radial tires (in place of P195/75R15SL BSW tires).

At this point, if you would like to further personalize your new Bronco II XLT, refer to page 13, find the Preferred Equipment Package number under XLT Trim, and select from the options listed under it.

BRONCO II (4x2/4x4)	PREFERRED EQUIPMENT PACKAGES					
	XL		XLT		Eddie Bauer	
	920A	921A	922A	930A	931A	934A
2.9 liter EFI V-6 engine	•	•	•	•	•	•
Super engine cooling						
4-speed Automatic Overdrive transmission (4x2); 5-speed manual overdrive transmission (4x4)	•	•	•	•	•	•
Air conditioning <sup>(1)</sup>				•	•	•
Light Group <sup>(2)</sup>		•	•	•	•	•
Interval windshield wipers		•	•	•	•	•
Bright low-mount swingaway mirrors		•	•	•	•	•
Tachometer		•	•	•	•	•
Deluxe Two-Tone paint (may be deleted)			•	•	•	•
Privacy™ glass quarter windows				•	•	•
Speed control/tilt steering wheel				•	•	•
Electronic AM radio with digital clock (may be deleted for credit)	•					
Electronic AM/FM stereo radio with digital clock		•	•	•	•	•
Electronic AM/FM stereo radio with cassette tape player and digital clock						•
Knitted vinyl reclining front bucket seats	•	•				
Cloth/vinyl reclining front bucket seats			•	•	•	•
Cloth/vinyl reclining front Captain's Chairs					•	•
Power windows and door locks				•	•	•
Flip-open rear window					•	
Swingaway spare tire carrier/cargo cover						•
Rear window defroster/wiper-washer				•		•
Sport wheel covers	•					
Deluxe wheel trim		•	•	•	•	•
Cast aluminum wheels					•	•
P195/75R15SL BSW all-season steel-belted radial tires	•	•	•	•		
P205/75R15SL RWL all-season steel-belted radial tires					•	•

(1) Standard at no extra cost. (2) Includes lights for ashtray, glove box, cargo area, engine compartment, plus headlamps on alert chime.



# 1987 Ford Bronco II



## PERSONALIZED OPTIONS

In addition to the Preferred Equipment Packages, Bronco II offers a wide selection of individual options which allow you to equip your vehicle even more to your particular needs.

Once you've chosen the series and the Preferred Equipment Package you desire, find your Preferred Equipment Package number in the chart on page 13, then choose from the options listed under it.

Options and their availability are subject to change during the year. Some options may be subject to ordering restrictions. Your Ford Dealer can give you complete details.

Following are descriptions of selected options that may be of particular interest to you.

### ELECTRONIC AM/FM STEREO RADIO WITH CASSETTE TAPE PLAYER

Among the features of this electronic stereo system are lighted liquid crystal display and illuminated controls, fully electronic manual or seek tuning, memory for 18 station settings (6 AM and 12 FM), and separate bass and treble controls. The cassette tape player features auto-reverse and Dolby® noise reduction. Also included are balance and fader controls for the front and rear speakers. All Bronco II sound systems for 1987 feature a digital clock.



Speed control and tilt steering wheel



Power windows and door locks



Air conditioner



Electronic AM/FM stereo radio with cassette tape player



Cast aluminum wheels; White sport wheels

## SPEED CONTROL AND TILT STEERING WHEEL

Speed controls are within easy reach on the steering wheel and include a convenient "resume" feature that lets you return to the speed previously set at the touch of a button. The tilt wheel adjusts to the most comfortable position, makes entry and exit easy.

## DELUXE TWO-TONE

Give your Bronco II XLT or XL series the distinctive style of Deluxe Two-Tone paint. The accent color is applied to mid-bodyside/liftgate below the chamfer and above the rocker area. A 2-color tape stripe at the two-tone break is included.



■ Body Color ■ Accent Color



■ = Optional ● = Included in equipment packages (see page 11 for additional standard features)

BRONCO II (4x2/4x4)	PREFERRED EQUIPMENT PACKAGES					
	XL	XL	XL	XL	Eddie Bauer	Eddie Bauer
	920A	921A	922A	930A	931A	934A
Air conditioning <sup>(1)</sup>	■	■	■	■	■	■
Touch-Drive electric shift — 4x4	■	■	■	■	■	■
4-speed Automatic Overdrive transmission — 4x4	■	■	■	■	■	■
Speed control/tilt steering wheel	■	■	■	■	■	■
Tachometer	■	■	■	■	■	■
Cloth/vinyl reclining front bucket seats	■	■	■	■	■	■
Cloth/vinyl reclining front Captain's Chairs	■	■	■	■	■	■
Cloth/vinyl 3-passenger front 60/40 split bench seat	■	■	■	■	■	■
Floor console	■	■	■	■	■	■
Power windows and door locks	■	■	■	■	■	■
Radio credit option	■	■	■	■	■	■
Electronic AM/FM stereo radio with digital clock	■	■	■	■	■	■
Electronic AM/FM stereo radio with cassette tape player and digital clock	■	■	■	■	■	■
Premium Sound System	■	■	■	■	■	■
Deluxe two-tone paint	■	■	■	■	■	■
Tilt-up/open air roof	■	■	■	■	■	■
Flip-open rear window	■	■	■	■	■	■
Rear window defroster/wiper-washer	■	■	■	■	■	■
Bright low-mount swingaway mirrors	■	■	■	■	■	■
Privacy™ glass quarter windows	■	■	■	■	■	■
Luggage rack	■	■	■	■	■	■
Swingaway spare tire carrier/cargo cover	■	■	■	■	■	■
Snow Plow Special Package — 4x4 <sup>(2)</sup>	■	■	■	■	■	■
Limited slip rear axle	■	■	■	■	■	■
Super engine cooling	■	■	■	■	■	■
Engine block heater	■	■	■	■	■	■
White sport wheels	■	■	■	■	■	■
Cast aluminum wheels	■	■	■	■	■	■
P195/75R15SL BSW all-terrain steel-belted radial tires — 4x4	■	■	■	■	■	■
P205/75R15SL RWL all-season steel-belted radial tires	■	■	■	■	■	■
P205/75R15SL RWL off-road steel-belted radial tires	■	■	■	■	■	■
California Emissions System	■	■	■	■	■	■
High Altitude Emissions System	■	■	■	■	■	■

(1) Included at no extra cost in packages 930A, 931A (XL), 933A and 934A (Eddie Bauer). (2) Includes heavy-duty frame, heavy-duty front springs with air bags, heavy-duty rear springs, 60-amp alternator and auxiliary transmission oil cooler. Requires Automatic Overdrive transmission and P205/75R15SL RWL all-season steel-belted radial tires. Front spoiler is deleted.

## COLOR SELECTIONS

Exterior Paint Colors	Interior Trim Colors		
	Regatta Blue	Canyon Red	Chestnut <sup>(1)</sup>
Raven Black		X	X
Silver Clearcoat Metallic	X	X	
Bright Canyon Red		X	X
Alpine Green Clearcoat Metallic <sup>(2)</sup>			X
Light Chestnut Clearcoat Metallic		X	X
Dark Canyon Red		X	X
Bright Regatta Blue Clearcoat Metallic	X		
Deep Shadow Blue Clearcoat Metallic	X		X
Colonial White	X	X	X
Shadow Grey Clearcoat Metallic	X	X	
Light Chestnut		X	X
Dark Walnut Clearcoat Metallic			X

(1) Eddie Bauer interior in Chestnut only. (2) Available with Eddie Bauer Bronco II only. Some of these paint colors are shown in this catalog. On the printed page, of course, colors are at best only representative of the originals. Your Ford Dealer can show you actual samples of paint colors as well as interior trim materials.





## SAFETY AND OWNER BENEFITS

### THE FORD QUALITY COMMITMENT

The Ford Quality Commitment is built on a basic and simple concept: Integrity. Integrity in the way we build our products, integrity in our dealerships' service and integrity in the treatment of our customers.

### TOGETHER WE CAN SAVE LIVES

Ford Motor Company strongly encourages all passengers to use their safety belts.

In Ford Bronco II, front seat lap and shoulder belts have automatic retractors. And the rear seat positions also have lap belts with retractors.

Ford urges the use of child and infant restraints, as required by law in all states. Ford's easy-to-install Tot-Guard (for children 20 to 50 pounds) and Infant Carrier (for children up to 20 pounds) are available at all Ford Dealers. If a child restraint requires a top-tether, Bronco II provides special anchorages.



### FORD LIFEGUARD DESIGN SAFETY FEATURES

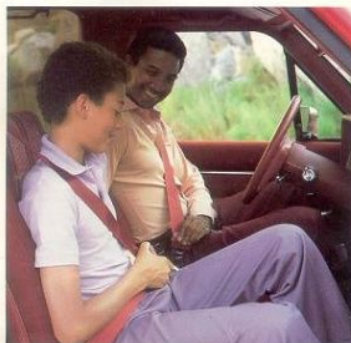
#### Vehicle Operation

- Split service hydraulic brake system with warning light
- Electronically controlled rear antilock brake system
- Corrosion-resistant brake lines
- Turn indicator with lane-changing signal feature
- Hazard warning flasher
- Backup lights
- Side marker lights
- Parking lights coupled with headlamps
- Two-speed windshield wipers
- Windshield washers
- Dual outside rearview mirrors
- Glare-reduced instrument panel, windshield wiper arms and windshield pillars
- Uniform transmission shift quadrant with safety starting switch (on all vehicles equipped with automatic transmission)
- Continuously variable control illumination intensity (instrument cluster lighting)

- Safety hood latch system
- Function-rated windshield defroster system
- Tamper-resistant (non-reversing) odometer
- Speedometer with highlighted 55 mph

#### Occupant Protection

- Safety-designed front end structure
- Safety-designed roof structure
- Two-position safety door latches
- Integral lap and shoulder belts with automatic retractors for front outboard occupants
- Lap belt for center front passenger (with optional 60/40 split bench seat)
- Safety belt fastening reminder warning light and buzzer or chime for the driver's seat
- Lap belts with retractors for rear seating positions



- Energy-absorbing steering column and steering wheel
- Energy-absorbing armrests and safety-designed door handles
- Energy-absorbing instrument panel with padding for right and center front (center front with optional 60/40 split bench seat) passengers
- Energy-absorbing sun visors
- Energy-absorbing front seat back tops
- Self-locking front seat back latches
- Head restraints for front outboard occupants
- Safety glove box latch
- Inside yieldaway rearview mirror
- Impact-absorbing laminated safety glass windshield
- Flame-resistant interior materials
- Safety-designed coat hook
- Safety-designed radio control knobs and push buttons

#### Anti-Theft

- Locking steering column with key warning buzzer (with "Park" interlock or push button for key release)
- Visible vehicle identification number



Participating Ford Dealers are now offering the Lifetime Service Guarantee, which guarantees their work on your Ford vehicle for as long as you own it. This means that the covered repair is paid for once — and never again. If it ever has to be fixed again, the repairing dealer will fix it free. Free parts. Free labor. Even if the vehicle is kept a lifetime. It doesn't matter where it was purchased, or whether it's new or used; the work is still covered by the repairing dealer.

This limited warranty covers vehicles in normal use. Items not covered include routine maintenance parts, belts, hoses, sheet metal, and upholstery. Ask to see this guarantee when you visit your participating Ford Dealer.



The optional Ford Extended Service Plan covers major components on new Ford cars and trucks for longer than the vehicle's basic warranty. The cost for this added protection is so moderate that it could pay for itself the first time you need it. Your Ford Dealer has full details.





Ford Motor Credit Company is interested in helping to fill the transportation needs of every qualified buyer of a Ford product. A participating dealer can arrange financing terms or a Red Carpet Lease® tailored to your circumstance. Ford Credit has offices conveniently located throughout the United States.



QUALITY REPLACEMENT PARTS  
FROM FORD

Genuine Ford and Motorcraft original equipment replacement parts meet the same high standards as those installed in production. They are your best assurance of quality and long-term satisfaction.

#### **SCHEDULED MAINTENANCE**

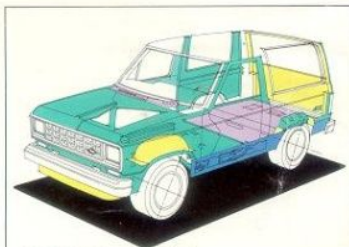
Here are some examples of scheduled maintenance intervals for the 1987 Bronco II. For complete recommendations, refer to the Bronco II Maintenance Booklet.

Engine oil and filter change	each 7,500 miles or 6 months
Spark plug change	each 30,000 miles
Air filter replacement	each 30,000 miles
Engine coolant replacement	each 30,000 miles or 3 years

#### **GREATER CORROSION PROTECTION**

Ford takes tougher measures than ever to protect its trucks from the damaging effects of corrosion. Ford Bronco II for 1987 offers additional improved corrosion protection including two-sided galvanized steel as well as galvanized steel for some body parts which were previously untreated.

These improvements, in addition to special treatments such as aluminized wax, applications of urethane spray, and the use of non-metallic parts which cannot corrode, are further evidence of Ford's continuing commitment to building high-quality trucks.



- 2-Sided Galvanized Metal
- 1-Sided Galvanized Metal
- Urethane Anti-Corrosion Spray
- Plastic Parts

#### **FORD-PAID REPAIR PROGRAMS AFTER THE WARRANTY PERIOD**

Sometimes Ford offers adjustment programs to pay all or part of the cost of certain repairs. These programs are intended to assist owners and are in addition to the warranty or to required recalls. Ask Ford or your dealer about such programs relating to your Ford or Lincoln-Mercury vehicle.

To get copies of any adjustment program for your vehicle or the vehicle of interest to you: Call Ford toll-free at 1-800-241-3673. Alaska/Hawaii call 1-800-241-3711 and in Georgia call 1-800-282-0959.

Or write Ford at:  
Ford Customer Information System  
Post Office Box 95427  
Atlanta, Georgia 30347

We'll need your name and address; year, make and model vehicle, as well as engine size; and whether you have a manual or automatic transmission.

#### **TECHNICAL SERVICE BULLETINS**

All vehicles need repairs during their lifetime. Sometimes Ford issues technical service bulletins (TSBs) and easy-to-read explanations describing unusual engine or transmission conditions which may lead to costly repairs, the recommended repairs, and new repair procedures. Often a repair now can prevent a more serious repair later. Ask Ford or your dealer for any such TSBs and explanations relating to your Ford or Lincoln-Mercury vehicle.

To get copies of these technical service bulletins and explanations for your vehicle or the vehicle of interest to you: Call Ford toll-free at 1-800-241-3673. Alaska/Hawaii call 1-800-241-3711 and in Georgia call 1-800-282-0959.

Or write Ford at:  
Ford Customer Information System  
Post Office Box 95427  
Atlanta, Georgia 30347

We'll need your name and address; year, make and model vehicle, as well as engine size; and whether you have a manual or automatic transmission.

#### **OPTIONS AVAILABILITY**

Options shown or described in this catalog are available at extra cost and may be offered only in combination with other options and subject to additional ordering requirements or limitations.

#### **PRODUCT CHANGES**

Ford Division reserves the right to change product specifications at any time without incurring obligations.

#### **"ASK YOUR FORD DEALER"**

Following publication of this catalog, certain changes in standard equipment, options, prices and the like, or product delays, may have occurred which would not be included in these pages. Your Ford Dealer is your best source for up-to-date information.

#### **BUY OR LEASE A NEW FORD BRONCO II**

**BUY OR LEASE  
A NEW FORD BRONCO II**



FDI-8713 Litho in U.S.A. 8/86

