

FORD

'93

# BRONCO





## 1993 BRONCO

America has had a long standing love affair with Ford Bronco. It's been the best-selling full-size utility vehicle for thirteen years in a row.\*

The '93 Bronco is simply more of a good thing. More standard power. More safety features. More comfort and convenience — The Best Never Rest.

### **Ford Trucks. The Best Never Rest.™**

For openers, power 4-wheel anti-lock braking is now standard. Along with the responsive 5.0L EFI V-8 gasoline engine. The optional electronic speed control provides smoother and faster response — including a sophisticated tap up/tap down feature in 1 m.p.h. increments.

Some things haven't changed. Like optional 4x4 Electric Touch Drive. Electronically fuel-injected engines. Optional 5.8L EFI V-8 power with an electronic 4-speed automatic overdrive transmission, the E4OD. Plus your choice of three models: Custom, XLT and Eddie Bauer.

All for one purpose: to make the 1993 Bronco a little easier to love than ever.

\*Based on model year manufacturers' reported retail deliveries through June, 1992.

*Bronco XLT in Deep Shadow Blue Metallic over Oxford White. Some equipment shown may be optional.*





## BRONCO INTERIORS

Spend more time in the great indoors. Drive a Bronco Eddie Bauer.

Just so there's no mistake about who's in command, the standard Captain's Chairs offer power lumbar support and optional leather seating surfaces.

Yet, no one really ever takes a back seat in an Eddie Bauer. The rear passenger bench seat is available with a leather seating surface too. Along with three-point outboard safety belts.

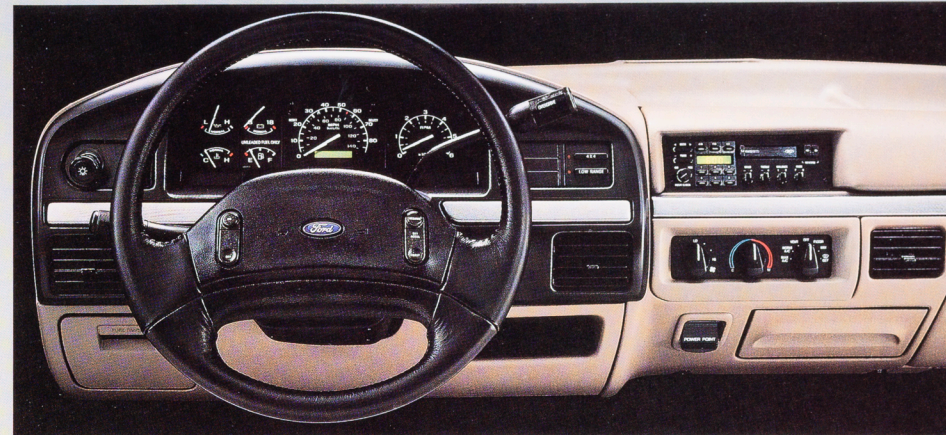
And listen to this. A high performance four-speaker sound system is standard. And because we care about the environment in which you live, XLT and Eddie Bauer models have a color-keyed, two-piece full-length headliner to help insulate you from exterior noise. After all, there are some things you can choose not to hear.

A Power Point electrical accessory outlet allows you to use appliances like coffee pots or electric shavers during break time.

With Bronco, little things still mean a lot.

**XLT interior shown above in Medium Mocha with cloth Captain's Chairs, including power lumbar support. Everything needed to operate optional power windows, power door locks and exterior electric mirrors is conveniently located on the driver's door panel.**

**The Bronco Eddie Bauer interior shown at right in Medium Mocha, includes Captain's Chairs with leather seating surfaces and power lumbar support. The Light/Convenience Group includes a console between the seats with built-in cup and audio cassette holders. The Eddie Bauer garment bag and duffel bag are complementary.**



## FUNCTIONAL

The Bronco interior is strikingly car-like. But make no mistake about it, Bronco for 1993 is first and foremost what it has been from the very beginning — a 4x4 truck.

Bronco performs. To begin with, the standard 5.0L EFI V-8 engine along with the 5-speed manual overdrive transmission is a formidable powerteam, developing a peak torque of 270 lbs.-ft. at 2,400 rpm.

The optional trailer towing package helps you get where you're going with plenty of muscle.

For example, the 5.0L V-8, equipped with the 3.55 rear axle and the optional electronic 4-speed E4OD automatic transmission, has a towing capacity of 6,600 lbs. (including passengers and cargo). The 5.8L EFI V-8 with the 3.55 rear axle and automatic transmission is rated at 7,100 lbs.

**The Eddie Bauer instrument panel shown above with black, leather-wrapped steering wheel and speed control/tilt steering wheel. New for '93, the electronic speed control now includes a tap up/tap down feature in 1 m.p.h. increments.**

**The optional 4x4 Electric Touch Drive, above left, lets you shift "on the fly" from 2-wheel drive to 4-wheel drive high and back at the touch of a button.**

**The optional E4OD overdrive cancel switch, above right, is designed to prevent upshift to overdrive gear — particularly useful in hilly terrain to obtain third gear engine braking on downgrades.**

**Some equipment shown on these pages may be optional.**



Bronco is equipped with standard automatic locking hubs. Manual locking hubs and 4x4 Electric Touch Drive are optional.

Electric Touch Drive allows you to shift "on the fly" from 2-wheel drive to 4-wheel drive high and back again at normal road speeds.

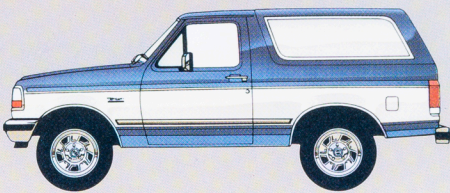
To lock the automatic hubs, simply stop the

vehicle and shift into 4-wheel drive high. The hubs are automatically locked as soon as the vehicle is driven forward. Once the hubs are engaged, you can shift "on the fly" from 2-wheel drive to 4-wheel drive high and back again at normal road speeds.

On the manual system an easy quarter turn of

each front hub selector knob is all that's required to lock the hubs into 4-wheel drive.

Bronco includes standard Twin-traction-beam front axle, front stabilizer bar, HD gas shocks, power brakes with 4-wheel anti-lock, a two-speed transfer case with skid plates, a 32-gallon fuel tank and more.



Deluxe Two-Tone includes accent color on the center bodyside area and the tailgate, between the mid-bodyside tape stripe to just below the lower bodyside protection molding.

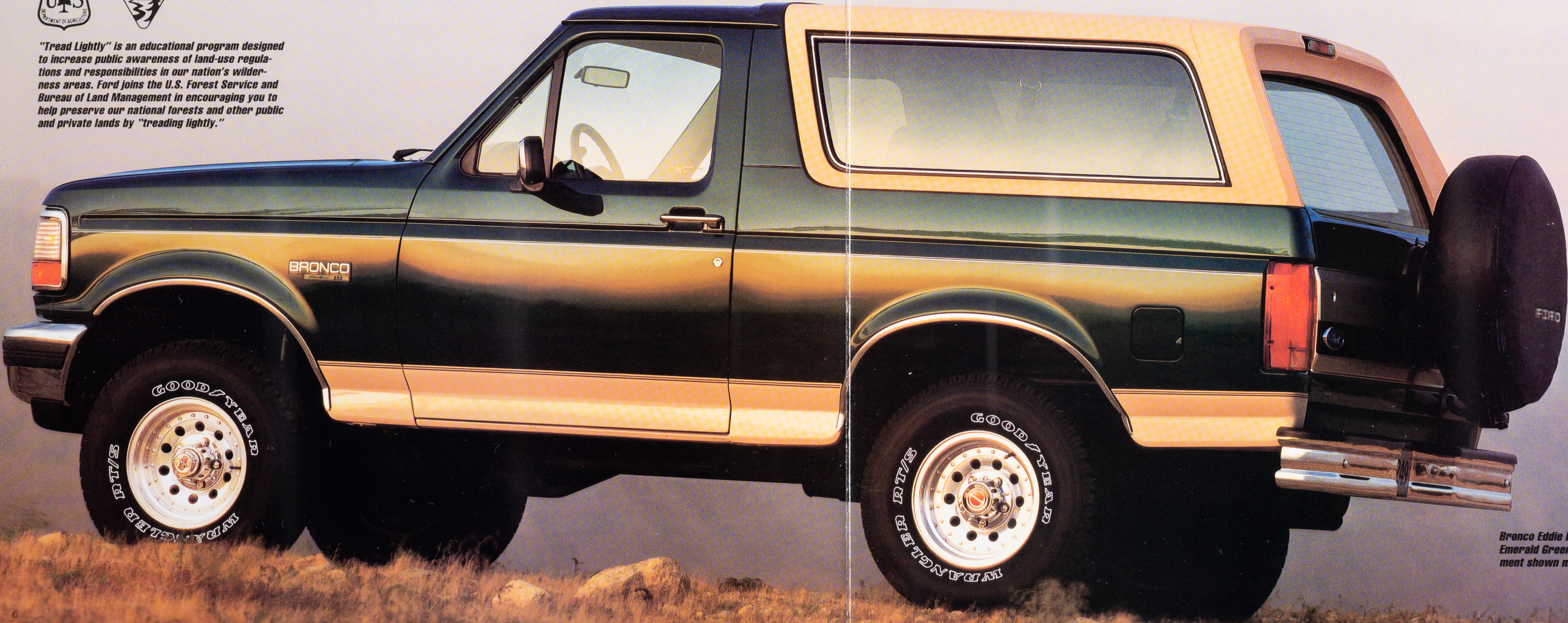
COLORS AND TRIMS

Exterior Paint Colors	Interior Trim Colors			
	Crystal Blue	Scarlet Red*	Dark Charcoal*	Medium Mocha
Custom, XLT				
Cabernet Red		■	■	■
Deep Shadow Blue Metallic	■		■	
Emerald Green Metallic			■	■
Raven Black		■	■	■
Oxford White	■	■	■	■
Eddie Bauer				
Medium Mocha Metallic				■
Cabernet Red				■
Deep Shadow Blue Metallic				■
Emerald Green Metallic				■
Raven Black				■

\*Not available on Custom.



"Tread Lightly" is an educational program designed to increase public awareness of land-use regulations and responsibilities in our nation's wilderness areas. Ford joins the U.S. Forest Service and Bureau of Land Management in encouraging you to help preserve our national forests and other public and private lands by "treading lightly."



Bronco Eddie Bauer shown in Emerald Green Metallic. Some equipment shown may be optional.



## PREFERRED EQUIPMENT PACKAGES AND OPTIONS

Note: Package content is subject to change.  
X = Included in Package S = Standard O = Optional U = Upgraded

	Custom 680A	XLT 683A	XLT 684A	Eddie Bauer 686A
<b>Seating</b>				
Vinyl bucket	S			
Cloth and vinyl bench	O	O		
Cloth Captain's Chairs (including power lumbar)		S	S	S
Captain's Chairs with leather seating surface (including power lumbar)			O	O
<b>Appearance/Comfort/Convenience</b>				
Climate Control Group (includes a/c and rear window defroster)	X	X	X	S
Luxury Group, includes:			X	X
Privacy™ glass			X	S
Bright electric mirrors			X	X
Light and Convenience Group (1)			X	S
Power door locks/windows			X	X
Electric AM/FM stereo radio with cassette player and digital clock			X	X
Bright low mount swing-away mirrors	O	O	O	
Wheel Group, includes:	X	X	X	X
Outside, swingaway spare tire carrier	X	X	X	X
Argent styled steel wheels	X	S	S	U
Chrome-styled steel wheels		X	X	U
Deluxe Two-Tone paint		O	O	
Forged aluminum, deep-dish wheels			O	S
License plate bracket	O	O	O	O
<b>Powerteams and Equipment</b>				
5.0L EFI V-8 with 5-speed manual overdrive transmission	S	S	S	
5.0L EFI V-8 with electronic 4-speed automatic overdrive transmission	O	O	O	S
5.8L EFI V-8 with electronic 4-speed automatic overdrive transmission		O	O	O
Manual locking hubs	O	O		
Electric Touch Drive 4x4			O	O
Engine block heater	O	O	O	O
<b>Handling and Towing</b>				
Trailer Towing Package (2)	O	O	O	O

(1) Includes headlights-on audible alert; underhood light; dual beam dome/map light; (std. dome light w/bench seat) and floor console (bench seat deletion). (2) Includes trailer wiring harness; HD turn signal flasher; rear stabilizer bar (front is std.); quad front and HD rear shock absorbers; HD battery — 84 AH / 850 C.C.A. (std. w/Eddie Bauer) plus super engine cooling (includes auxiliary transmission oil cooler w/ automatic transmission and 5.8L V-8 engine).

## BUMPER-TO-BUMPER COVERAGE

The 36-month/36,000 mile bumper-to-bumper coverage of Ford's new vehicle limited warranty covers the complete vehicle (except tires, battery, service adjustments and other items covered under separate provisions) against defects in factory-supplied materials or workmanship. For complete information, see your Ford dealer.



Optional Ford Extended Service Plans can cover major components on new

Ford cars and light trucks for longer than the vehicle's basic warranty. Your dealer has full details.

## SPECIFY GENUINE FORD COLLISION REPAIR PARTS

Genuine Ford sheet metal and plastic replacement collision parts, such as hood, doors, fenders and bumper components, are the right choice — and for all the right reasons. Genuine Ford parts are equal to original parts in

fit, finish, structural integrity and corrosion protection. Ford parts are the same as those used on new vehicles which are certified to meet Federal Motor Vehicle Safety Standards. And all Ford sheet metal parts are covered by the exclusive Ford Lifelong Sheet Metal Guarantee. Ask your dealer to see a copy of this limited warranty. Don't settle for imitations. Ask your insurer to authorize genuine Ford collision parts.



Ford Credit offers advantageous financing and leasing arrangements for qualified customers, plus the convenience of making them right where you buy or lease your truck — at your Ford Dealer

## OPTIONS AVAILABILITY

Options shown or described in this catalog are available at extra cost and may be offered only in combination with other options or subject to additional ordering requirements or limitations

## MAJOR STANDARD FEATURES

### Exterior

Aero-halogen headlamps with high-impact lenses  
Tinted glass, all around  
Privacy™ glass (Eddie Bauer)  
Bright aero-styled manual mirrors  
Swing-down tailgate w/power window  
Wraparound taillamps w/high-impact lenses

### Interior

Air conditioning (Eddie Bauer)  
Rear window defroster (Eddie Bauer)  
Color-keyed, full-length, cloth headliner (except Custom)  
Instrumentation: voltmeter, oil pressure and temperature gauges w/indicator lights  
Tachometer (except Custom)  
Light/Convenience Group (Eddie Bauer)  
Power Point electrical accessory outlet  
Electronic AM/FM stereo with digital clock  
Cloth Captain's Chairs (except Custom)  
Speed control/tilt steering wheel (except Custom)  
Black, leather-wrapped steering wheel (except Custom)  
Interval windshield wipers

### Functional

Twin-traction-beam front axle  
Maintenance-free 72AH (650 C.C.A.) battery  
Power brakes, w/4-wheel anti-lock  
5.0L EFI V-8 engine  
5-speed manual overdrive transmission  
32.0 gallon fuel tank  
Automatic front locking hubs  
HD gas shock absorbers  
Front stabilizer bar  
Power steering  
Two-speed transfer case w/skid plate  
Five P235/75R15XL BSW All-Season tires  
2,450-lb. front springs  
3,770-lb. rear springs

## PRODUCT CHANGES

Following publication of the catalog, certain changes in standard equipment, options, prices and the like, or product delays, may have occurred which would not be included in these pages. Your Ford dealer is your best source for up-to-date information.

Ford Division reserves the right to change product specifications at any time without incurring obligations.

